



**Riverfront Acreage 16 kilometres
North of Tête Jaune Cache**



www.landquest.com

Kurt Nielsen
kurt@landquest.com
(250) 898-7200



Marketing British Columbia to the World®



“The Source” for Oceanfront, Lakefront,
Islands, Ranches, Resorts & Land
in British Columbia

www.landquest.com

Riverfront Acreage 16 kilometres North of Tête Jaune Cache

PROPERTY DETAILS

Listing Number:	24176
Price:	\$264,500
Taxes (2024):	\$655
Size:	18.47 acres

DESCRIPTION

Prime riverfront acreage featuring 230 feet of river frontage and stunning 360-degree mountain views. Located in a coveted farmland area near McBride, Valmont, and Jasper National Park, this property offers a cleared area ready for potential building. Accessible directly from Yellowhead Highway 16, it provides easy transportation connections. Nearby recreational opportunities abound with hiking, hot springs, hunting, fishing, camping, and white water rafting, making it an ideal location for outdoor enthusiasts and those seeking natural beauty and tranquility.

LOCATION

15.5 km north of Tête Jaune Cache on the Yellowhead Highway

DIRECTIONS

Tete Jaune Cache is located at the junction of the Yellowhead Highway 5 and Highway 16, 338 km (211 miles) north of Kamloops. To the south is Valmount (18 km/11 miles), and to the north on Highway 16 is the community of McBride.

AREA DATA

Located on the Fraser River in the scenic Robson Valley, only 11 km (7 miles) west of Mount Robson, Tête Jaune Cache is at the confluence of the Fraser and Robson Rivers, and marks the intersection of the Yellowhead Highway 5 and Yellowhead Highway 16.

The valley is surrounded by three mountain ranges; the Monashee, the Premier and the Rocky Mountains, and cradles the historical Tête Jaune Cache, a growing town of about 1,500 people on the site of the original Tête Jaune Cache village.

The old village is gone now, and only a few ruins remain of the once thriving community of 3,000 people. This was the nerve centre during the construction of the Grand Trunk Railway in the early 1900s. It was the final destination for the flat bottom stern wheelers that travelled the Fraser River bringing equipment and supplies to the railway camps.

RECREATION

Fly fishing, hiking, white water rafting.

HISTORY

Tête Jaune Cache was named after Métis fur trader and trapper Pierre Bostonais who guided for the Hudson's Bay Company in the 1800s. Bostonais was nicknamed Tête Jaune by the French-speaking voyageurs because of his blonde hair (Tête jaune is French for "yellow head"). The Secwepemc had an established village of tents and quiggly



holes on the banks of the Fraser in this area rich in salmon and wild berries when encountered by Bostonais, but the townsite land of Tête Jaune Cache was officially located in 1901 and Crown-granted in 1902. During the construction of the Grand Trunk Pacific Railway, Tête Jaune Cache was a prosperous community and was the head of navigation for the paddle steamers of Foley, Welch and Stewart and the BC Express Company. The town was a booming collection of lumber shacks, tents, and log houses which brought thousands of pioneers, trappers, prospectors, foresters, and entrepreneurs to the Robson Valley. Major industries in historic Tête Jaune were timber, railways, steamship trade, and mining, especially for the locally abundant mica. Some of the largest and cleanest sheets of mica extracted in the era of its highest demand (for its usage in lanterns and stoves) came from this region, and the remains of one such mine are near the Mica Mountain hiking trail. The pool halls, theatres, restaurants, jewelers, lady barbers, saloons, and trading posts are no more, with only a few stone chimneys remaining as evidence of this bustling town's existence, but the Valley Museum and Archives in McBride, as well as the Valemount Historical Society maintains

an excellent collection of photographs from the heyday of this boom town, c. 1910-1918.

MAP REFERENCE

53° 3'24.08"N and 119°36'54.50"W

BOUNDARIES

Please see mapping section, all boundaries are approximate.

SERVICES

Hydro nearby.

ZONING

RU 5

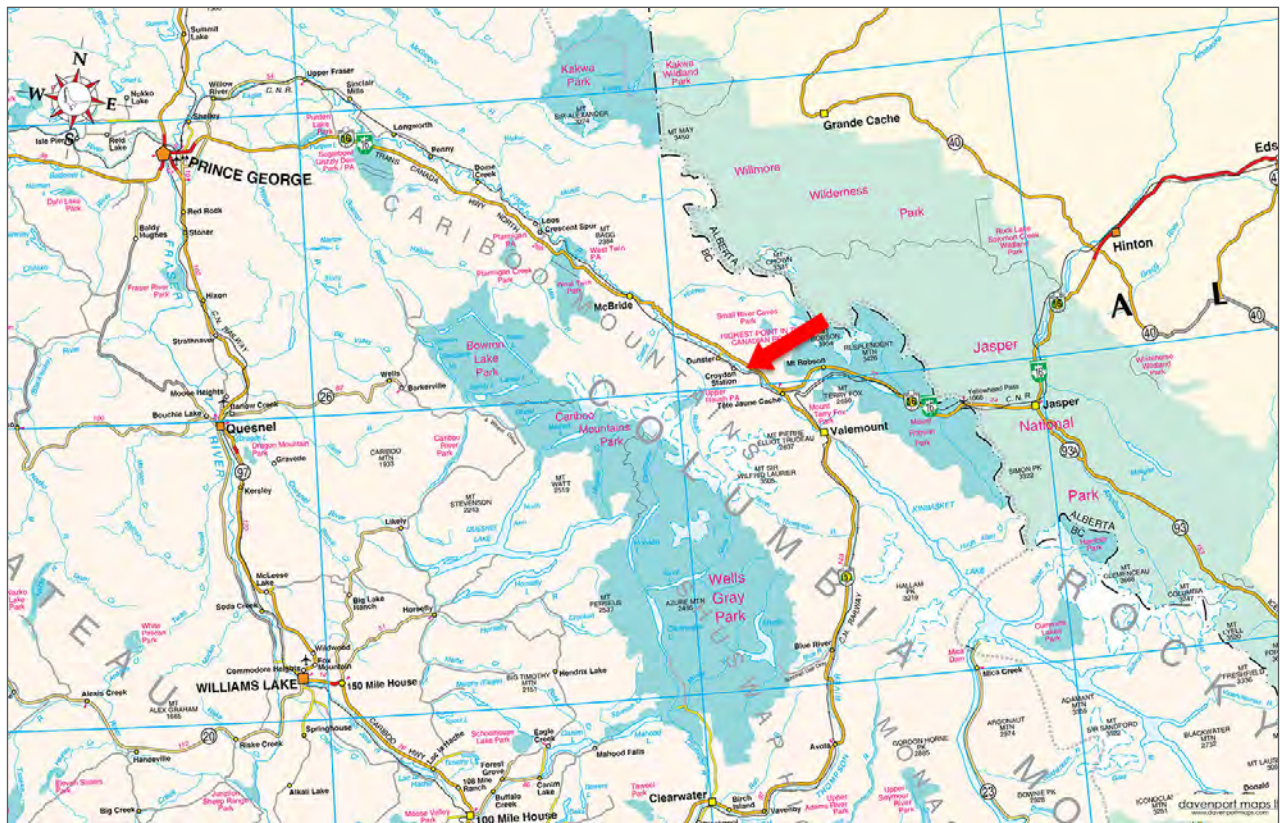
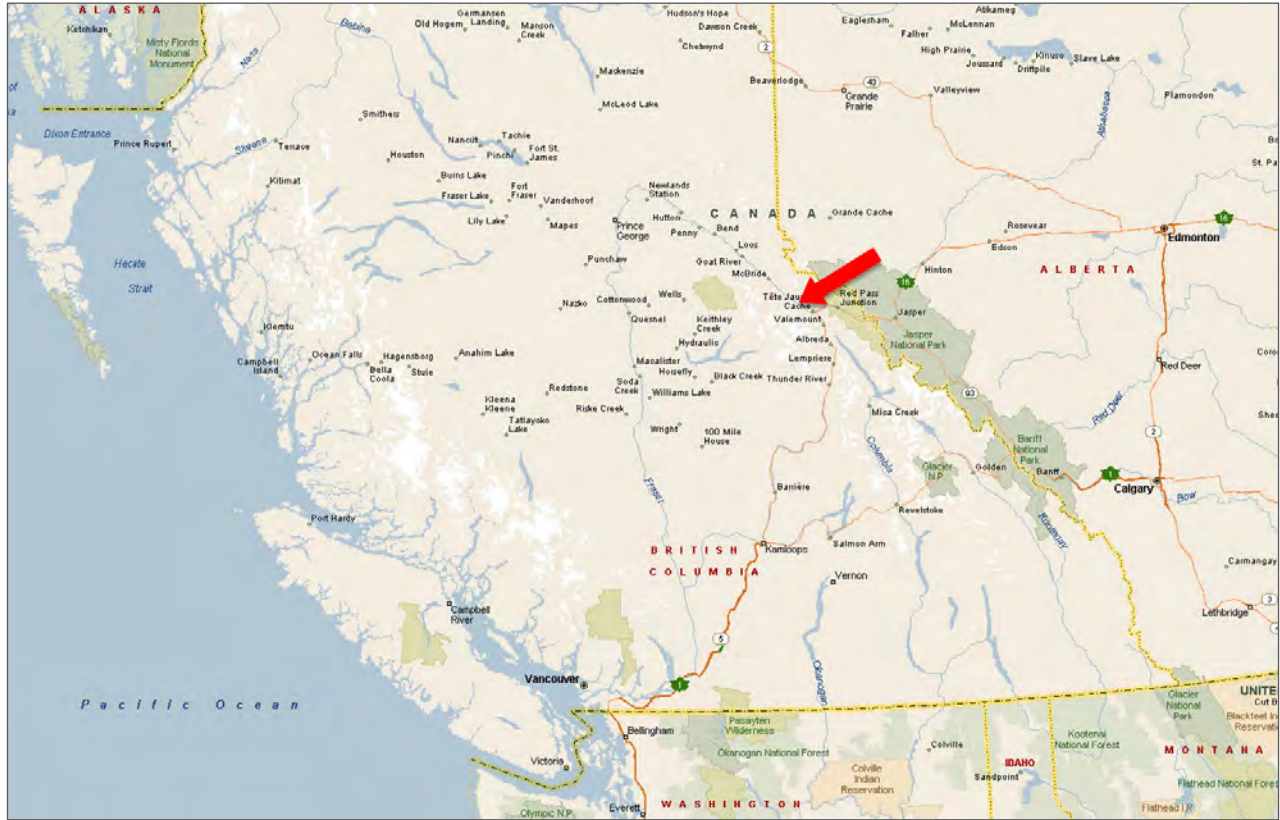
Zoning regulations available from Listing Agent.

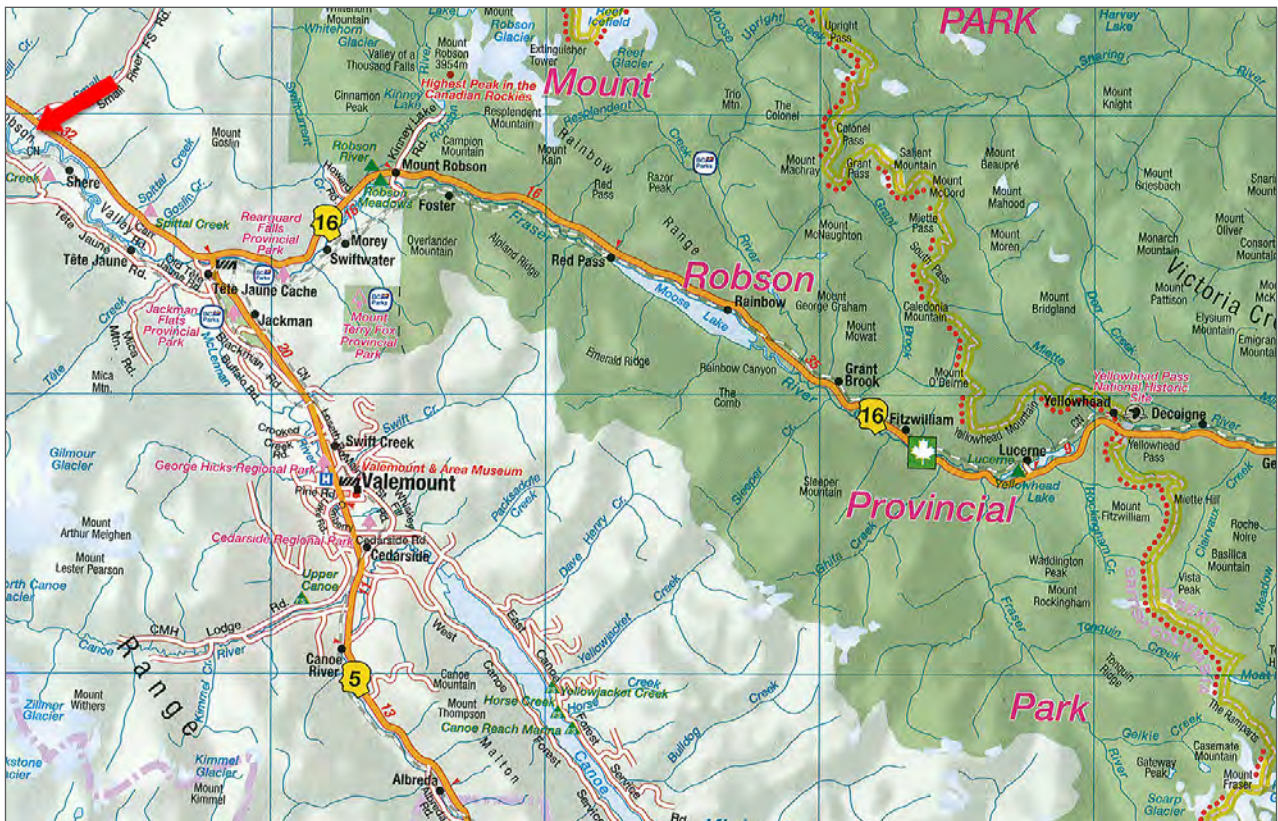
LEGAL

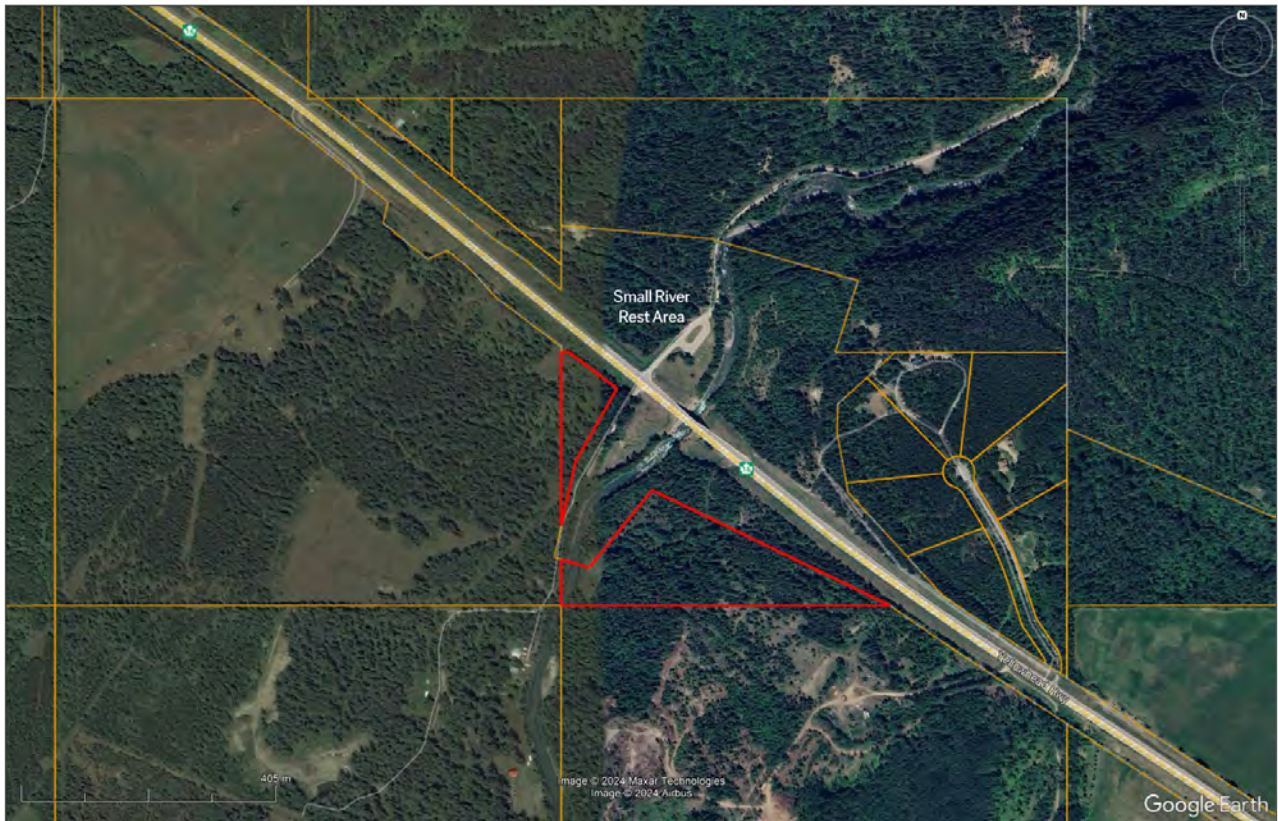
THE SOUTH 1/2 OF THE EAST 1/2 OF DISTRICT LOT 6033 CARIBOO DISTRICT EXCEPT PLAN 22699, PLAN BCP6911 AND PLAN BCP7536 PID 006-320-961

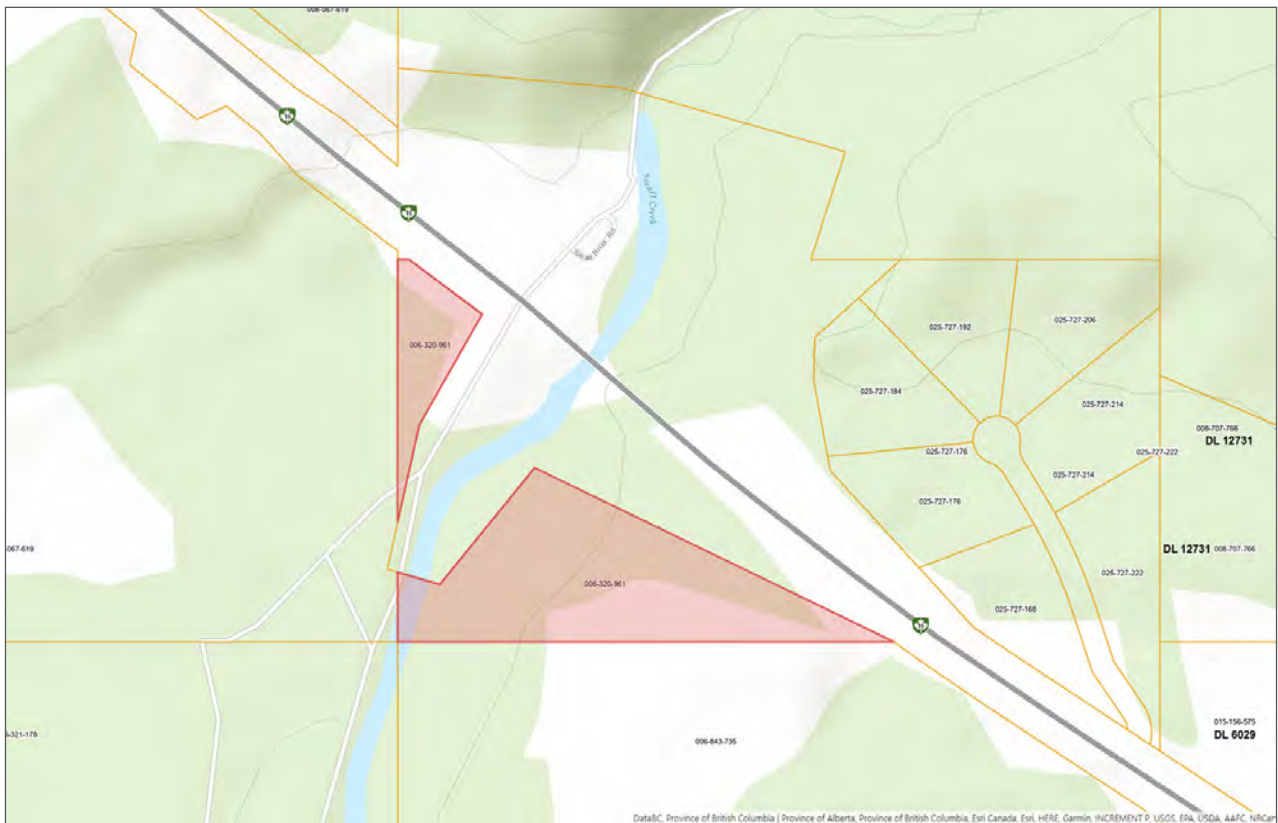
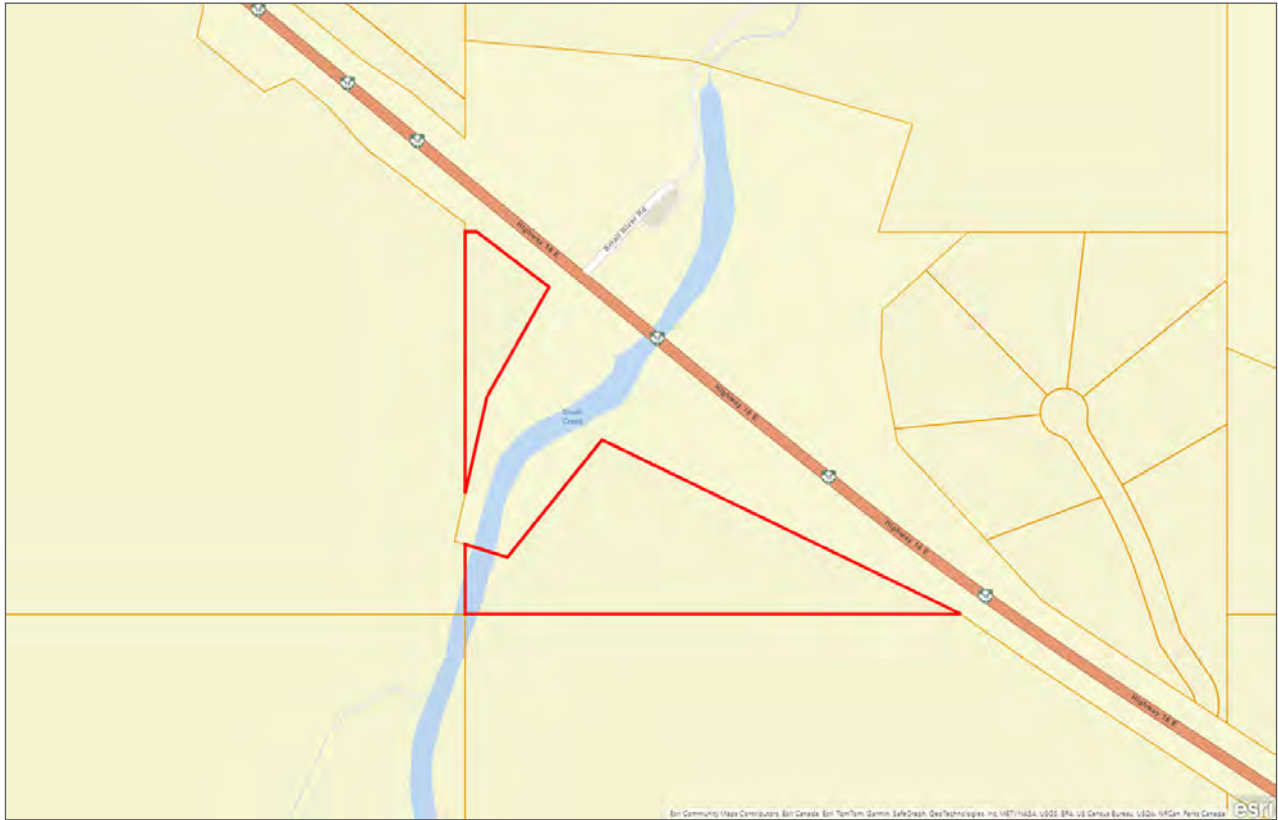












Notes





Marketing British Columbia to the World®



www.landquest.com



Kurt Nielsen

Managing Broker
kurt@landquest.com
(250) 898-7200

LandQuest® Realty Corporation
101 - 313 Sixth Street
New Westminster, BC V3L 3A7

Phone: (604) 664-7630 Fax: (604) 516-6504
Toll Free: 1-866-558-5263 (LAND)