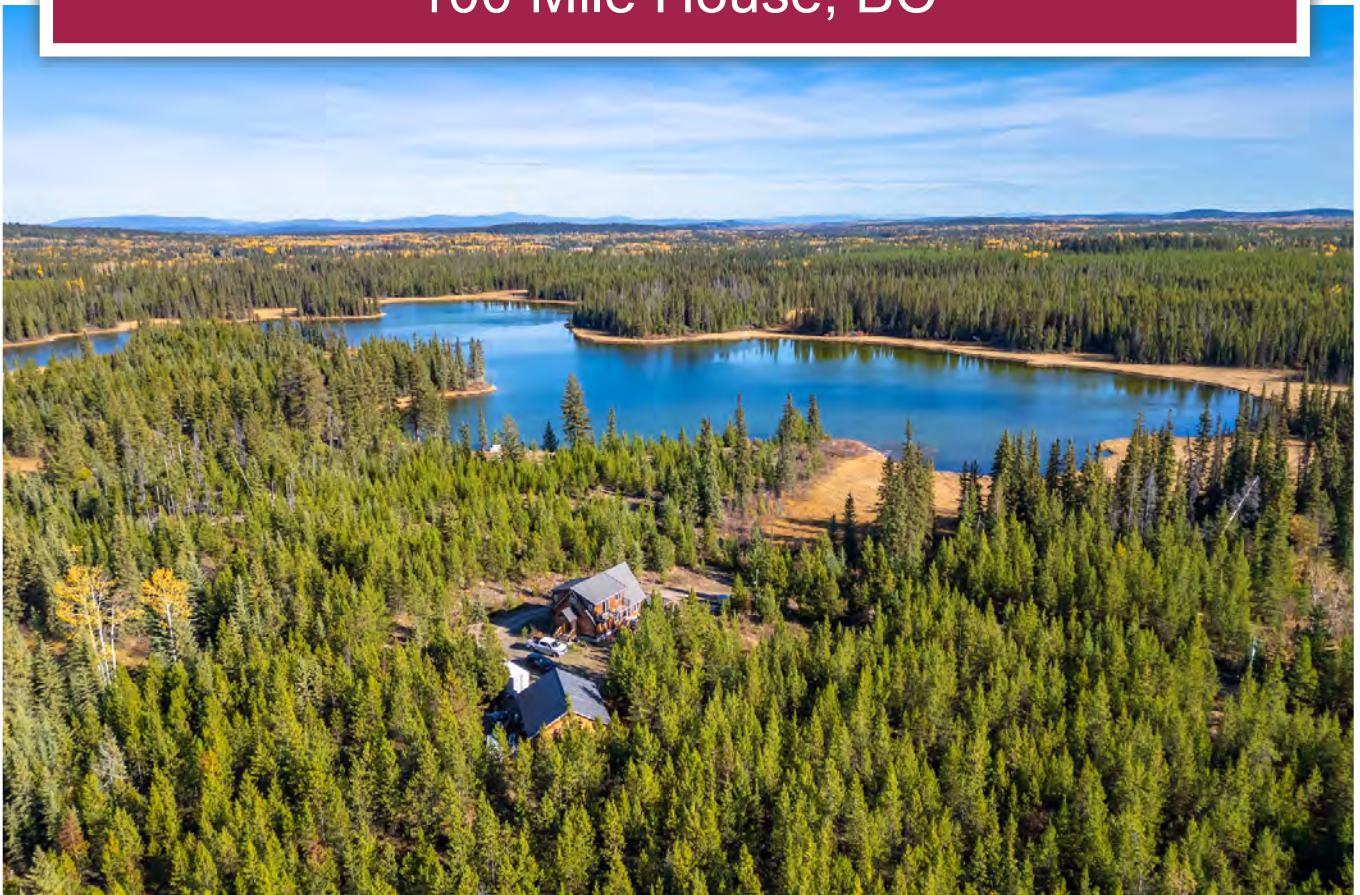




**Retreat on Fishing Lake**  
100 Mile House, BC



[www.landquest.com](http://www.landquest.com)

**Sam Hodson**  
Personal Real Estate Corporation  
[sam@landquest.com](mailto:sam@landquest.com)  
(604) 809-2616



Marketing British Columbia to the World®



“The Source” for Oceanfront, Lakefront,  
Islands, Ranches, Resorts & Land  
in British Columbia

[www.landquest.com](http://www.landquest.com)

# Outdoorsman's Retreat on Fishing Lake

100 Mile House, BC

## PROPERTY DETAILS

<b>Listing Number:</b>	24247
<b>Price:</b>	\$925,000
<b>Taxes (2024):</b>	\$3,764.64
<b>Size:</b>	40 acres
<b>Zoning:</b>	RA2

## DESCRIPTION

Located 11 km south from the community of 100 Mile House, sits 40 acres bordered on 2 sides by miles and miles of untouched Crown land. This large acreage is technically not lakefront with a small sliver of Crown land in between the property and the lakefront, however the property does function as though it is lakefront. The property line is only 57 metres to the lake and the seller has a boat launch on the lakefront along with a fire pit and seating area. A true outdoorsman's playground, with exceptional trout fishing for rainbow trout in the 10 lbs. range, with deer bear and moose calling the area home. A rare gem. The property is extremely private, with a 1 km driveway from Highway 97 to the house and no neighbor visible from the home. Directly from the house you can hop on your horse, ATV, snowmobile or on foot and link up with the nearby logging road network and endless backcountry exploration.

This great spot feels like its miles from everyone yet located just a few minutes from 100 Mile House. The beautiful Pan-Abode log home features 4 bedrooms and 3 bathrooms, a bright open plan,

vaulted ceilings, floor to ceiling rock fireplace, huge deck, and all with amazing views of the lake. There is an attached single garage as well as an oversized double garage that is great for all the toys or amazing workshop. The property is mostly natural for easy maintenance making this a great recreational getaway or year-round home. Enjoy all this amazing spot has to offer.

Call the listing agent today for more information or to book a time to go by for a look.

## LOCATION

7141 Caribou Highway 97 S - 100 Mile House, BC

## DIRECTIONS

From 100 Mile House, travel 11 km south on Highway 97 to the driveway to the property.

## AREA DATA

A small community located within the Cariboo region, Lone Butte is approximately 25 kilometres southeast of 100 Mile House. The area is characterized by its rustic, natural beauty, and it is surrounded by numerous lakes, forests, and scenic landscapes that attract visitors looking for outdoor recreation.

Lone Butte is known for its historic railway water tower, which stands as a significant monument in the village and highlights the community's connection to the railways that once fueled its development. The area is rich with history and small-town charm, which locals often appreciate. Life in Lone Butte is typically described as peaceful and close to nature,

offering a slower pace that appeals to those who value privacy, space, and a strong connection to the outdoors. Many residents enjoy the sense of close-knit community, combined with the tranquility of rural living, which provides an ideal environment for those seeking a quieter, less hectic lifestyle.

Nearby provincial parks such as Green Lake Provincial Park and Bridge Lake Provincial Park offer significant outdoor opportunities for hiking, fishing, and camping. Green Lake is known for its clear, emerald waters and sandy beaches, making it a popular spot for both locals and tourists during the summer months. Additionally, the surrounding lakes, such as Horse Lake and Sheridan Lake, are popular for boating, fishing, and wildlife viewing.

Lone Butte is appreciated by its residents for its scenic surroundings, recreational opportunities, and quiet rural lifestyle, while its proximity to larger towns like 100 Mile House allows access to more services without sacrificing the peaceful atmosphere of the community.

## RECREATION

Recreation options in Lone Butte and its surrounding area include a variety of outdoor activities, ideal for nature lovers.

### Green Lake Provincial Park

- Clear, emerald waters and sandy beaches
- Swimming, kayaking, paddleboarding, and boating
- Campgrounds and picnic areas
- Birdwatching and wildlife viewing

### Bridge Lake Provincial Park

- Hiking trails through dense forests
- Fishing for trout and kokanee
- Canoeing and kayaking opportunities
- Lakeside camping and wildlife observation



### Sheridan Lake

- Renowned for excellent fishing (rainbow trout)
- Boating, swimming, and picnicking areas
- Trail networks for walking and mountain biking

### Horse Lake

- Popular for fishing, swimming, and boating
- Winter activities such as ice fishing and snowmobiling

### Hiking Trails

Lone Butte Trail is a short hike to the top of the butte for panoramic views of the surrounding area. Sulphurous Lake trails surrounding the lake, offer scenic views, birdwatching, and wildlife encounters.

### ATV and Snowmobile Trails

Extensive network of trails for ATViing and snowmobiling in the Cariboo region, with access to forested areas and backcountry terrain.

### Horseback Riding

Many trails around Lone Butte are ideal for horseback riding, with ranches and guided tours available.

These recreation options make Lone Butte a year-round destination for outdoor activities, with popular summer activities like fishing, boating, and hiking, and winter options such as ice fishing and snowmobiling.

### HISTORY

Developed in the early 20th century as a key stop along the Pacific Great Eastern Railway (PGE) which connected the Cariboo region to the rest of the province. The community's name comes from the prominent butte, a geological feature that stands alone in the area, which was used as a navigational landmark for travelers and early settlers. The railway was vital in establishing Lone Butte as a small but important service center for ranchers, loggers, and travelers during the railway boom.

Before European settlement, the area around Lone Butte was part of the traditional territory of the Secwépemc (Shuswap) First Nation. Today, their presence and history remain an important part of the cultural landscape.

As railway use declined and road networks improved, Lone Butte became less dependent on the rail system, shifting toward a more tourism- and recreation-based economy. The community's historical railway water tower, one of the last of its kind in British Columbia, remains a key landmark and reminder of its past. Though small, Lone Butte has evolved from its early railway roots to become a hub for outdoor adventure seekers and those looking for a quieter way of life in the Cariboo.

### MAP REFERENCE

51°33'8.46"N and 121°20'57.70"W

### BOUNDARIES

Please see mapping section, all boundaries are approximate.

### SERVICES

- Power
- Septic
- Drilled well
- Cell service
- Internet

### IMPROVEMENTS

- Beautiful Pan-Abode log home features 4 bedrooms, 3 bathrooms, a bright open plan, vaulted ceilings, floor to ceiling rock fireplace, huge deck, and all with amazing views of the lake
- Attached single garage
- Oversized double garage that is great for all the toys or amazing workshop

### LEGAL

DISTRICT LOT 8156 LILLOOET DISTRICT

PID 013-520-458



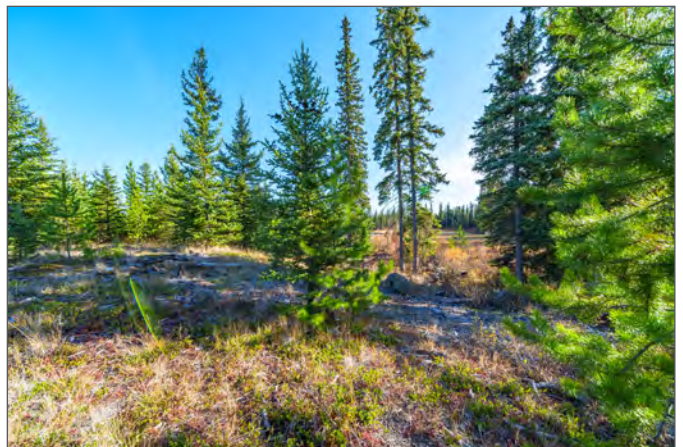


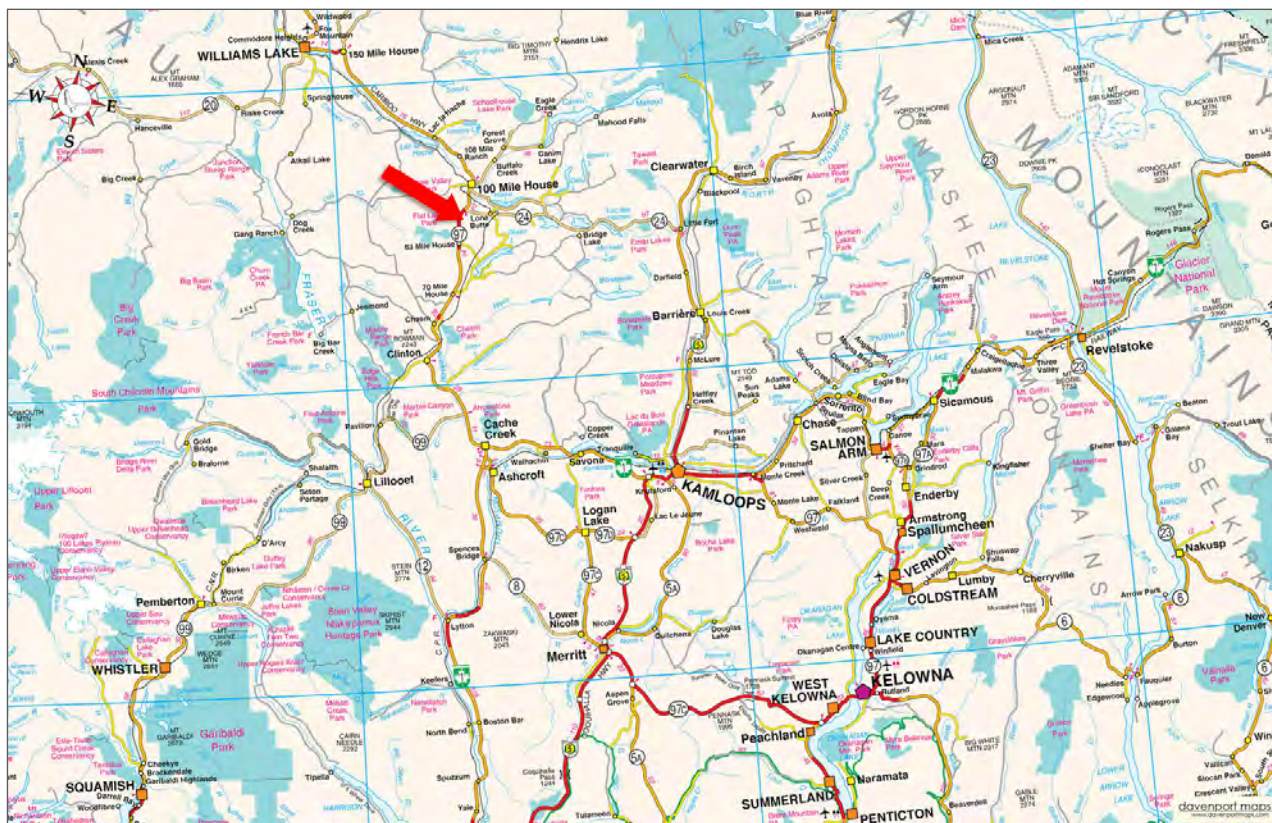
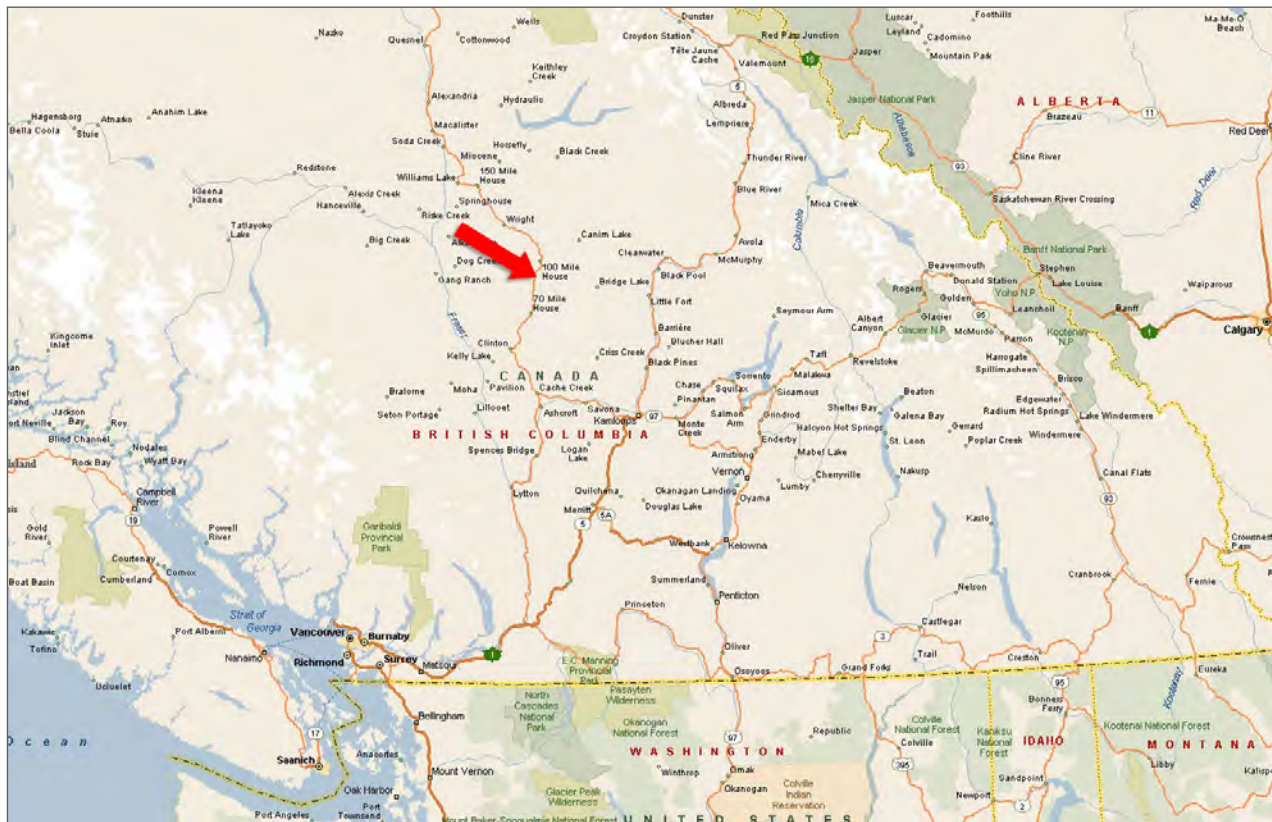


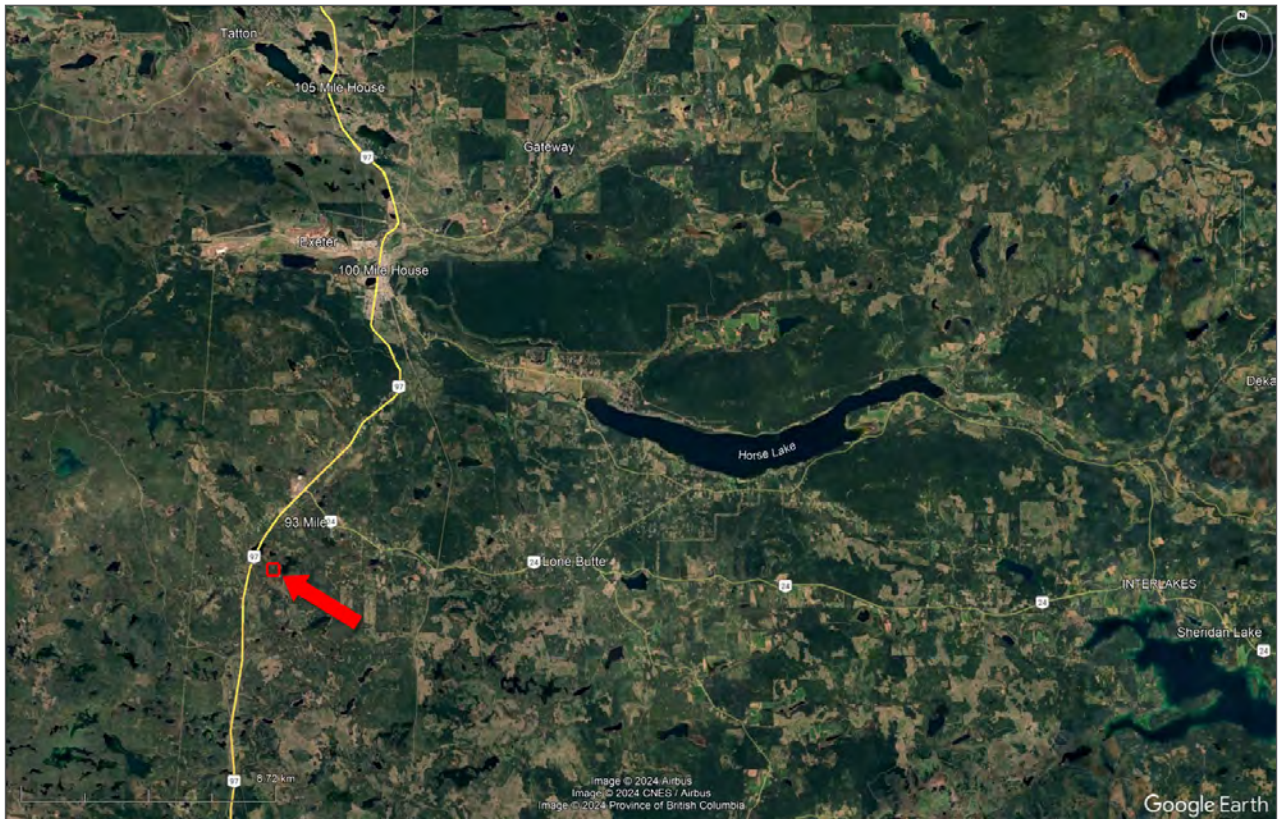


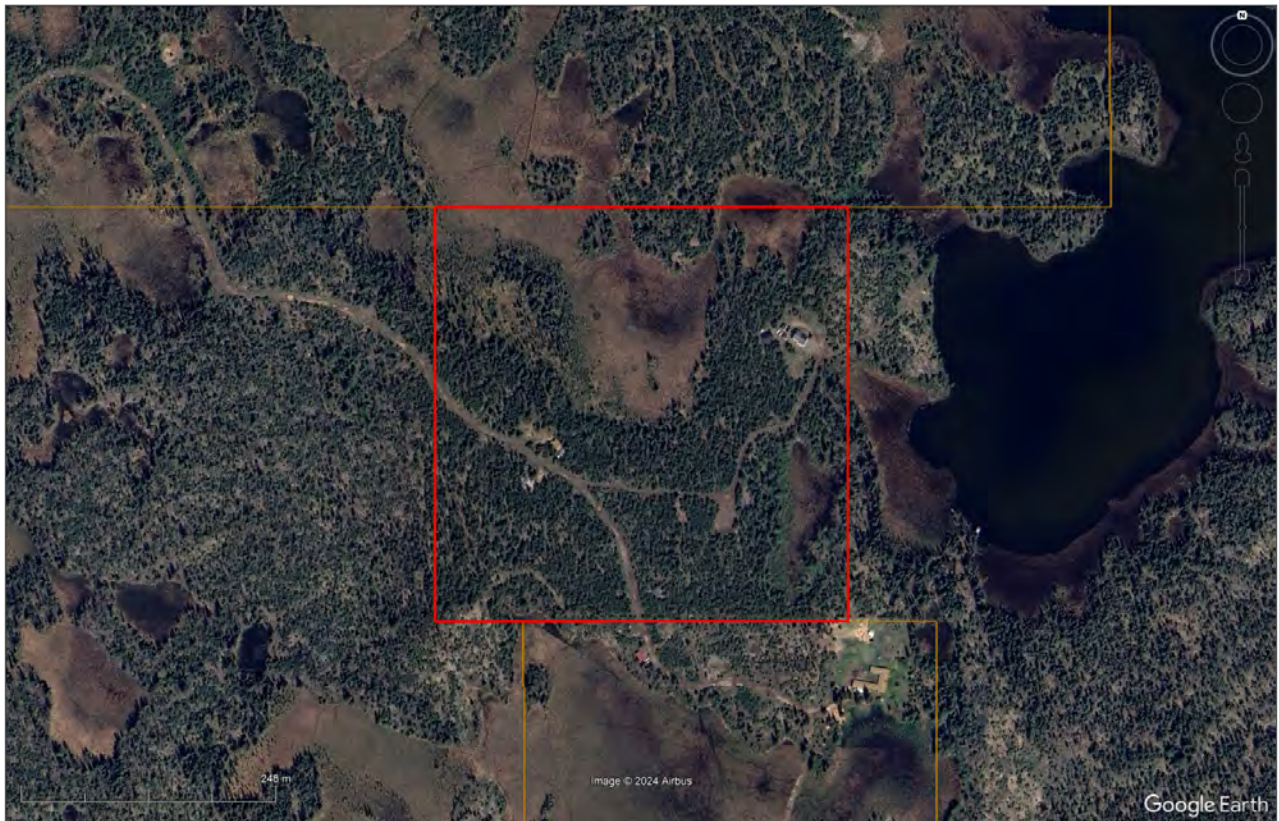
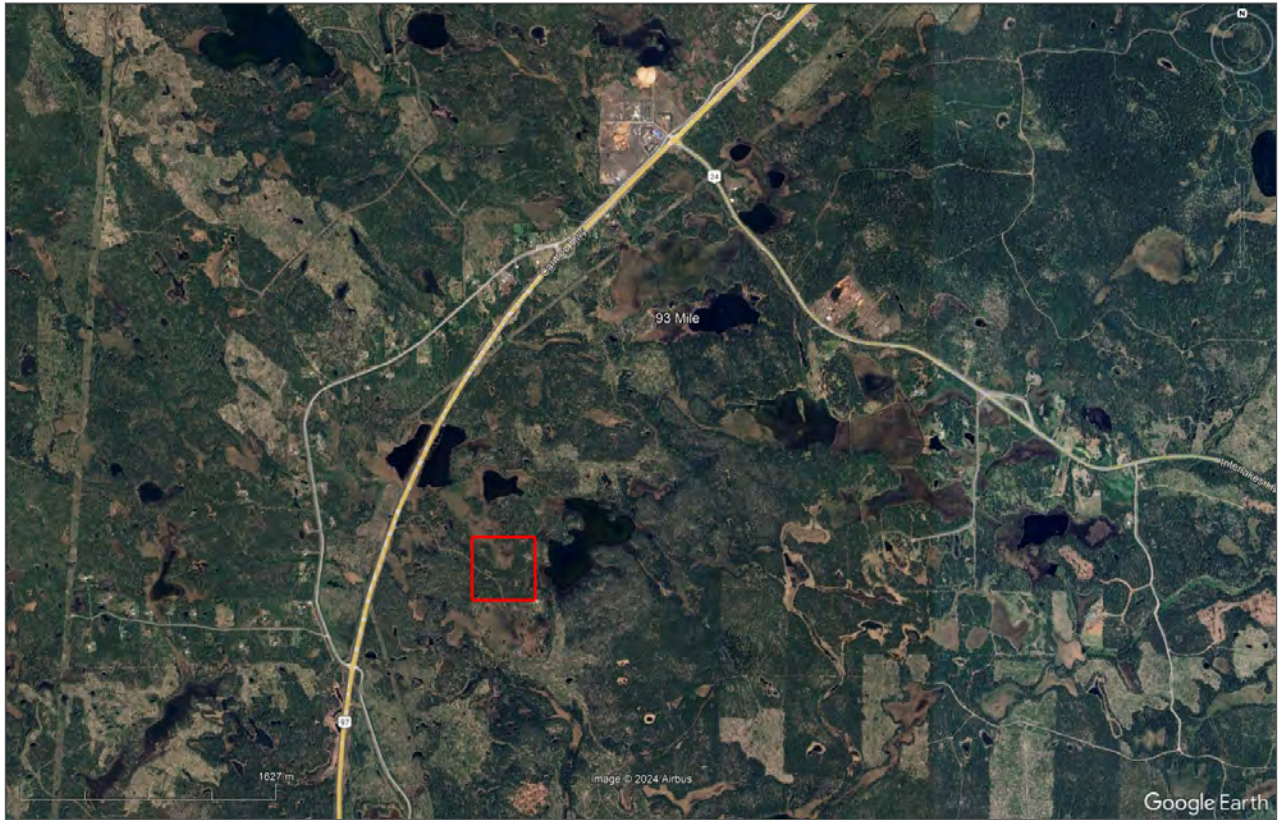


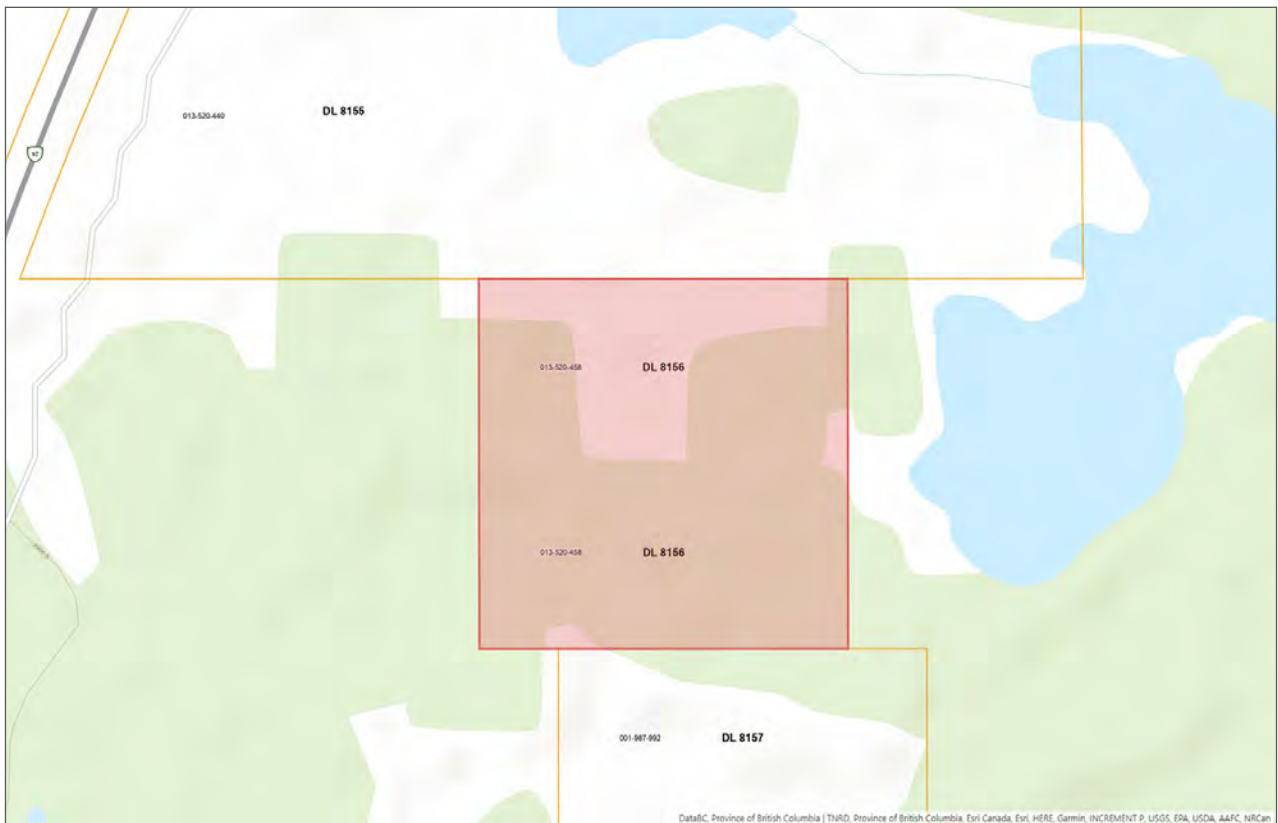
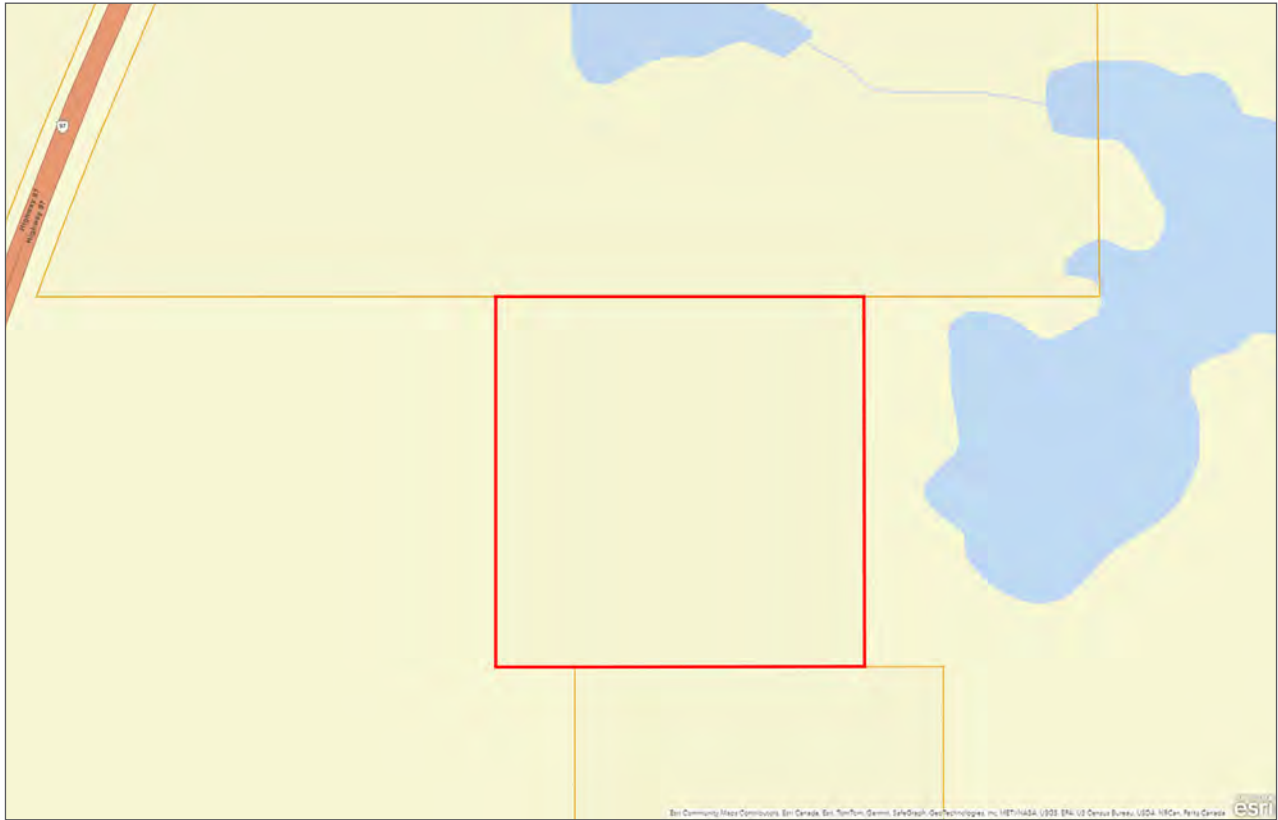














Marketing British Columbia to the World®



[www.landquest.com](http://www.landquest.com)



**Sam Hodson**  
Personal Real Estate Corporation  
President  
[sam@landquest.com](mailto:sam@landquest.com)  
(604) 809-2616

---

LandQuest® Realty Corporation  
101 - 313 Sixth Street  
New Westminster, BC V3L 3A7

Phone: (604) 664-7630 Fax: (604) 516-6504  
Toll Free: 1-866-558-5263 (LAND)