



**Off-Grid Earthship  
160 Acres on Private Lake**



[www.landquest.com](http://www.landquest.com)

**Fawn Gunderson**  
Personal Real Estate Corporation  
[fawn@landquest.com](mailto:fawn@landquest.com)  
(250) 982-2314



Marketing British Columbia to the World®



“The Source” for Oceanfront, Lakefront,  
Islands, Ranches, Resorts & Land  
in British Columbia

[www.landquest.com](http://www.landquest.com)

# Off-Grid Earthship on 160 Acres on Private Lake - Chilcotin

## PROPERTY DETAILS

<b>Listing Number:</b>	24289
<b>Price:</b>	\$590,000
<b>Taxes (2024):</b>	\$2,015.42
<b>Size:</b>	160 acres
<b>Zoning:</b>	RR1

## DESCRIPTION

Perfectly appointed on 160 private and treed acres on Brittany Lake, this off-grid property offers a sustainable lifestyle and unparalleled serenity. The centerpiece is a unique 1,100 sq. ft. Earthship™ Biotope-designed home, thoughtfully constructed with tires, rammed earth, wood, and green metal siding to harmonize with the natural environment. Its passive solar design minimizes the need for heating in winter and cooling in summer. The home features a walkout underground level with a spacious bedroom (14' x 12'), a large exercise room (17' x 16') that could easily convert into two additional bedrooms, a bathroom (8' x 7') with shower and sink, and a cozy living room (14' x 16'). Upstairs, the open-concept kitchen (19' x 19') boasts a new energy-efficient DC/AC solar fridge, freezer, propane stove, and a large electric fridge. Attached to the home is a 500 sq. ft. greenhouse that runs its full length, complete with stone garden beds and a washing machine powered by the property's solar energy system. An insulated outhouse with a bucket composting system, added in 2017, enhances the property's self-sufficient design.

Approximately 700 metres from the main house lies a small lakefront cabin, offering an additional retreat in this peaceful setting. The cabin is equipped with solar power, a wood stove for heating, a small deck for relaxing.

This treed property is a haven for outdoor enthusiasts and those seeking an eco-conscious lifestyle, with its blend of innovative design, modern comforts, and untouched wilderness. Whether you're drawn to sustainable living or a private lakeside escape, this property offers an extraordinary opportunity to live in harmony with nature.

## LOCATION

7655 Brittany Creek Forest Service Road - Brittany Lake, approximately 15 km from Henry's crossing near Chilko Lake.

## DIRECTIONS

A variety of transportation options are available to suit individual preferences. Brittany Lake is a short 15 km from Henry's crossing which is a 4-hour drive on well-maintained roads from Williams Lake.

### From Vancouver

Travel north on Highway 97, the historic Gold Rush Trail, through the Fraser Canyon to Williams Lake. Then head west on Highway 20 to Tatla Lake. From there travel for one hour on a well-maintained and well-marked gravel road to Henry's crossing. Approximately 15 km past the bridge, you will find the driveway to this remote property.

### From Bella Coola

BC Ferries offers 3 trips per week from Vancouver Island (Port Hardy) to Bella Coola. From Bella Coola you can drive through the breath-taking Tweedsmuir Provincial Park. The home is located just 3.5 hours from Bella Coola by vehicle.

Pacific Coast also offers 1-hour daily scheduled flights into Bella Coola or Anahim Lake, as well as 1 hour/twice daily from Vancouver to Williams Lake.

Brittany Lake is also floatplane accessible with a summer dock.

### AREA DATA

The Chilcotin region is a vast and remote wilderness known for its breathtaking beauty and rich natural resources. Dominated by rugged mountains, expansive plateaus, and pristine lakes, the area offers endless opportunities for outdoor enthusiasts. Chilko Lake, one of the largest high-altitude freshwater lakes in North America, is a centerpiece of the region and a gateway to stunning landscapes. The surrounding forests, rivers, and valleys are teeming with wildlife, including grizzly bears, moose, and eagles, making it a paradise for nature lovers. The Chilcotin is also home to a diverse range of recreational activities, including fishing, hiking, horseback riding, kayaking, and winter sports like snowshoeing and snowmobiling.

This land has been the traditional territory of the Tsilhqot'in First Nation for thousands of years, and their culture and history are deeply intertwined with the region. The Tsilhqot'in people have a profound connection to the land, relying on it for sustenance, community, and spiritual practices. Visitors can learn about their traditions, history, and stewardship of the land, which continue to shape the Chilcotin's identity. The area's Indigenous heritage enriches its already stunning landscape, offering a unique cultural dimension to the outdoor experiences available.



### RECREATION

The Chilcotin region, home to stunning Chilko Lake, is a paradise for outdoor enthusiasts with an endless array of activities. Anglers can cast their lines in pristine rivers and lakes, reeling in Dolly Varden and trout, or witness the incredible annual sockeye salmon run from mid-August to mid-October, one of the largest in British Columbia. This natural spectacle also draws grizzly bears, offering unparalleled wildlife viewing as these majestic creatures feast on spawning salmon. Chilko Lake's crystal-clear waters are perfect for kayaking, canoeing, or even windsurfing, while its surrounding landscapes beckon hikers and mountain bikers to explore their rugged beauty.

For a truly authentic experience, discover the Chilcotin on horseback, riding through endless trails that showcase the region's untouched wilderness. Winter transforms the area into a snowy playground for cross-country skiing, snowshoeing, and snowmobiling. Whether you're paddling tranquil waters, rafting exhilarating rapids, or simply taking in the breathtaking scenery, the Chilcotin offers year-round adventures in a spectacular, unspoiled setting.

### HISTORY

Earthships are innovative, sustainable homes designed to minimize environmental impact and

maximize self-sufficiency. First conceptualized by architect Michael Reynolds in the 1970s, Earthships aim to use readily available, recycled materials like tires, bottles, and earth to construct durable and energy-efficient buildings. These homes are built with passive solar principles, relying on their orientation and thermal mass to regulate indoor temperatures naturally. By capturing and storing rainwater, treating greywater, and integrating renewable energy systems like solar and wind, Earthships are designed to operate entirely off-grid.

The philosophy behind Earthships stems from the growing need for eco-friendly living solutions in response to climate change, resource depletion, and rising energy costs. They provide an alternative to conventional housing by promoting energy independence, reducing waste, and harmonizing with natural ecosystems. Earthships have gained popularity worldwide for their ability to provide a comfortable, modern lifestyle while treading lightly on the planet, making them ideal for individuals seeking sustainable, self-reliant living in any climate.

## MAP REFERENCE

51°41'3.10"N and 123°59'5.67"W

## SERVICES

### Solar Power Systems

Original system: 110/220V, 5kVa output, 440Ah flooded acid batteries, powers water well and pressure system. Expandable for 220V electric hot water and range.

New system (approx. \$40K): Over 6kW continuous solar input (expandable to 8kW), 15hWh LiFePO4 battery capacity, powers all house appliances simultaneously.

Combined, these systems enable the house to run entirely on electricity, with propane as a backup.

### Backup Power

Large 7000i Honda generator restores low batteries in hours; rarely needed. Additional backup generator for added reliability. The wind turbine generates 1kW, providing extra power during windy conditions or nighttime.

### Heating and Hot Water

Efficient propane hot water heater with a wood stove for heating, providing a cozy and sustainable option.

### Water Systems

Year-round creek with domestic (2.27305 m<sup>3</sup>/day) and irrigation (111,013.2 m<sup>3</sup>/year) water rights—a rare and valuable feature.

High-yield well: 10 gallons/minute of quality drinking water, powered by a variable-drive energy-efficient pump.

### Connectivity

Excellent Internet, satellite TV, and phone service available.

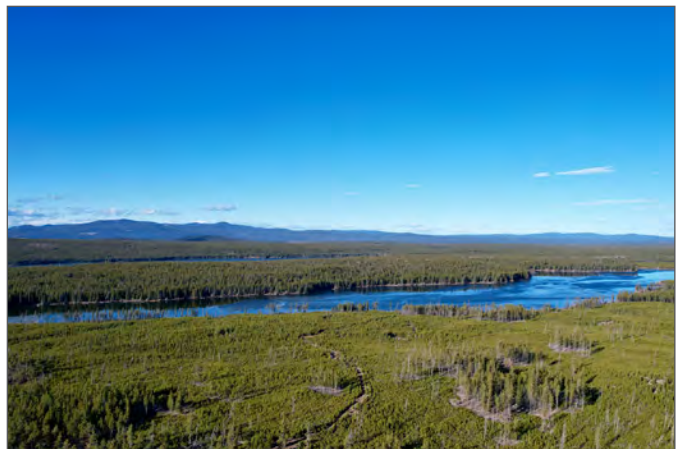
## IMPROVEMENTS

- 8' x 8' storage shed
- 12' x 12' storage shed
- Lake cabin with 2 bunks, wood stove, solar power, deck; about 700 m from the main house

## LEGAL

DL: 4867; LD: Lillooet (27); Narrative: Brittany

PID 002-889-790









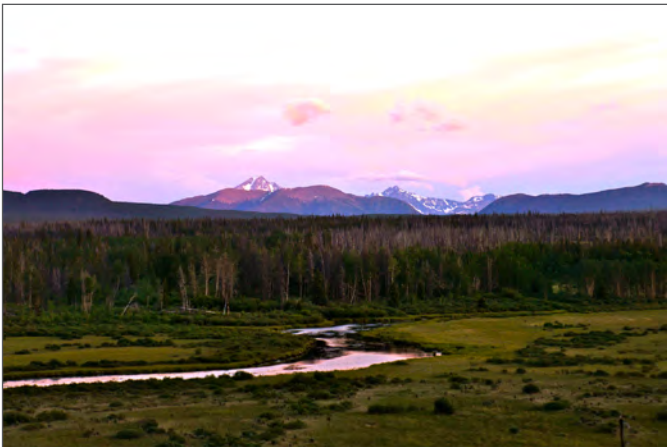


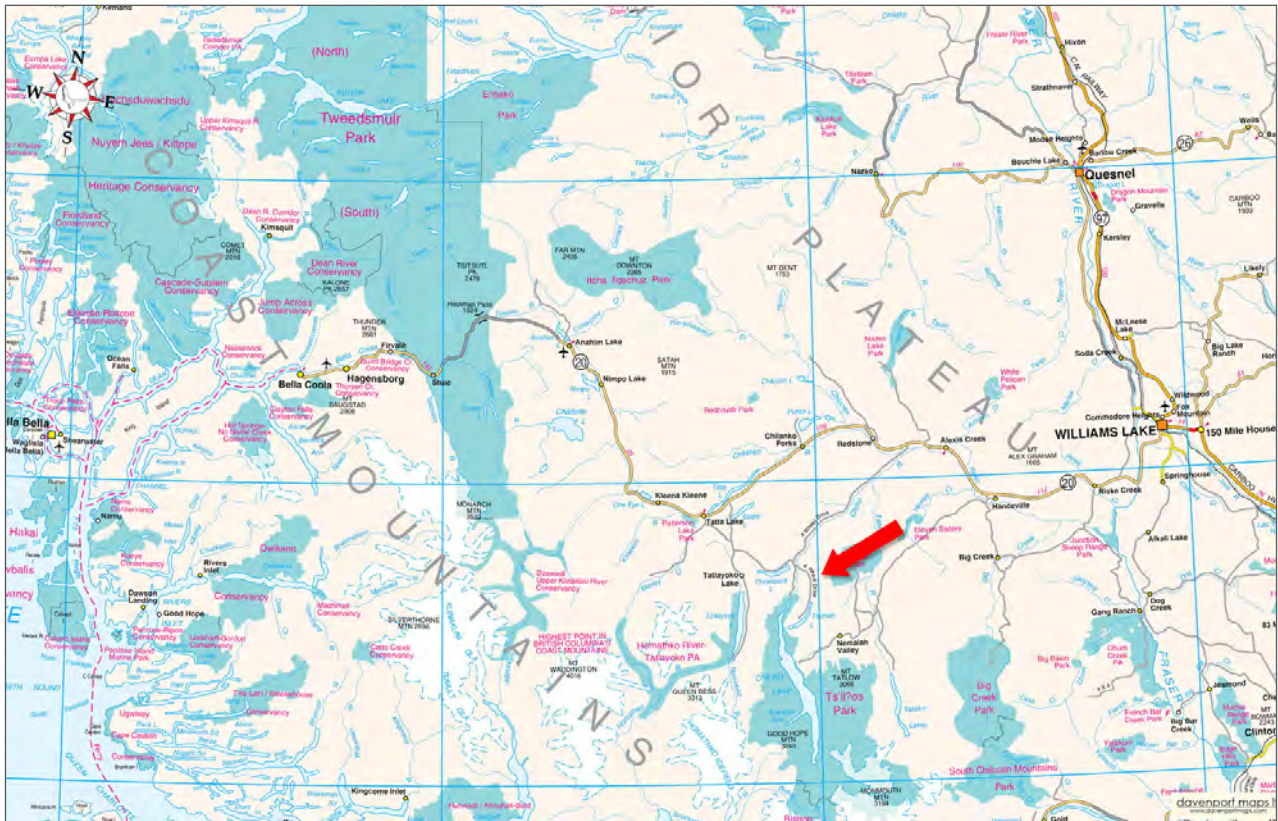


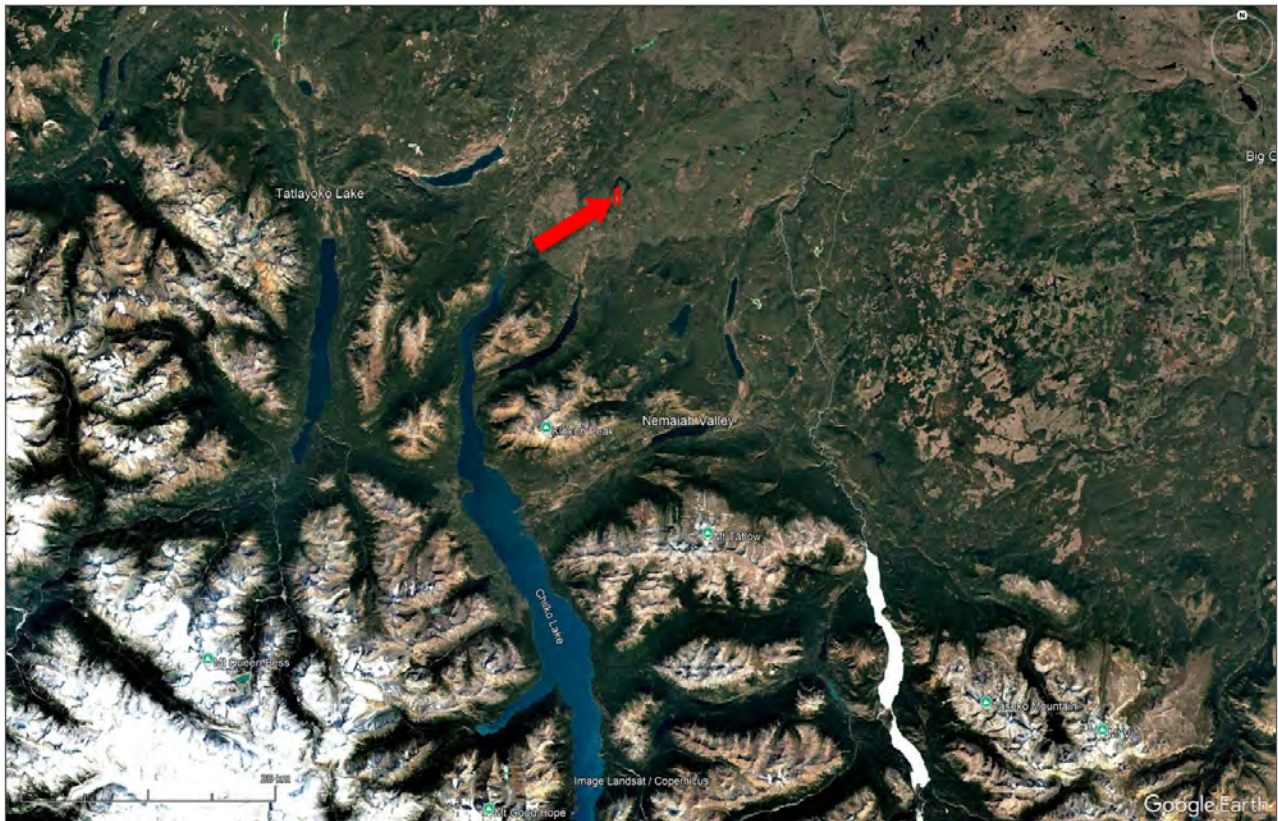
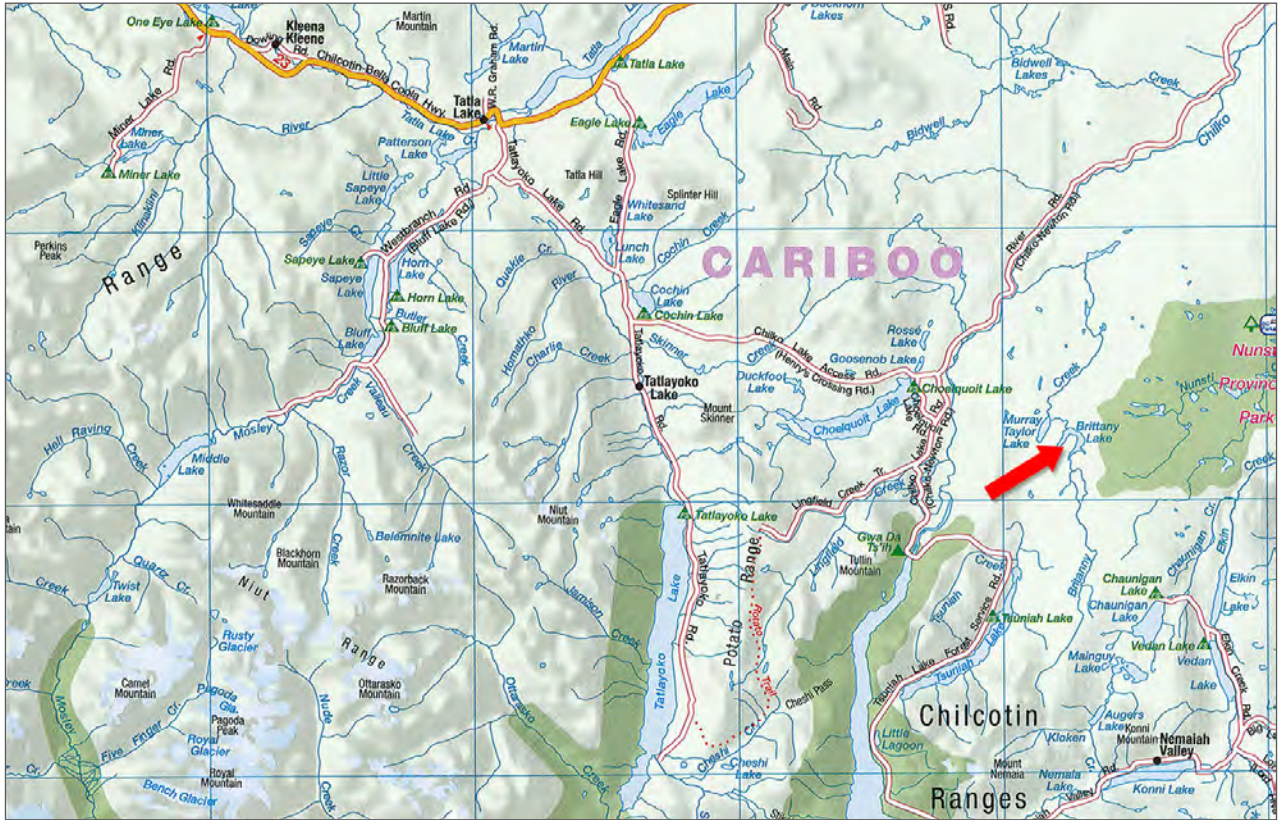




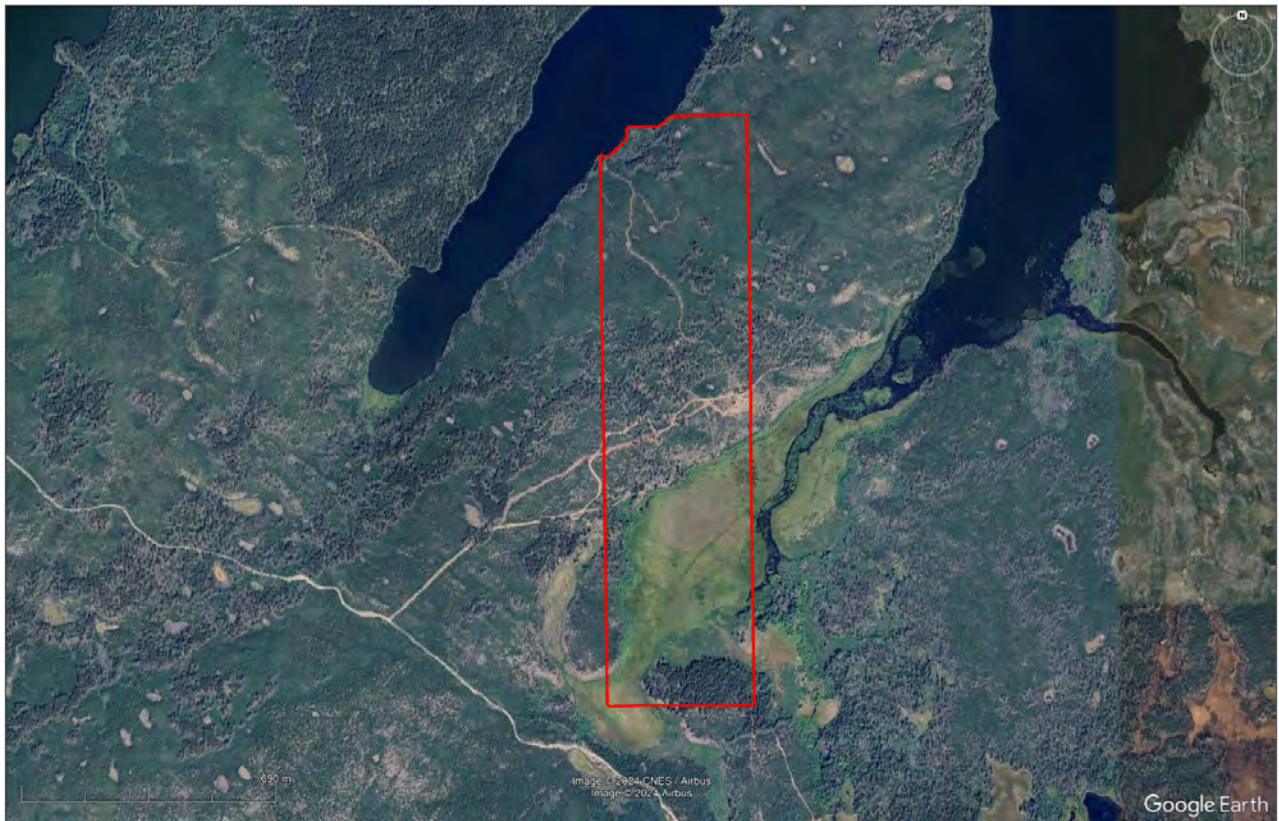
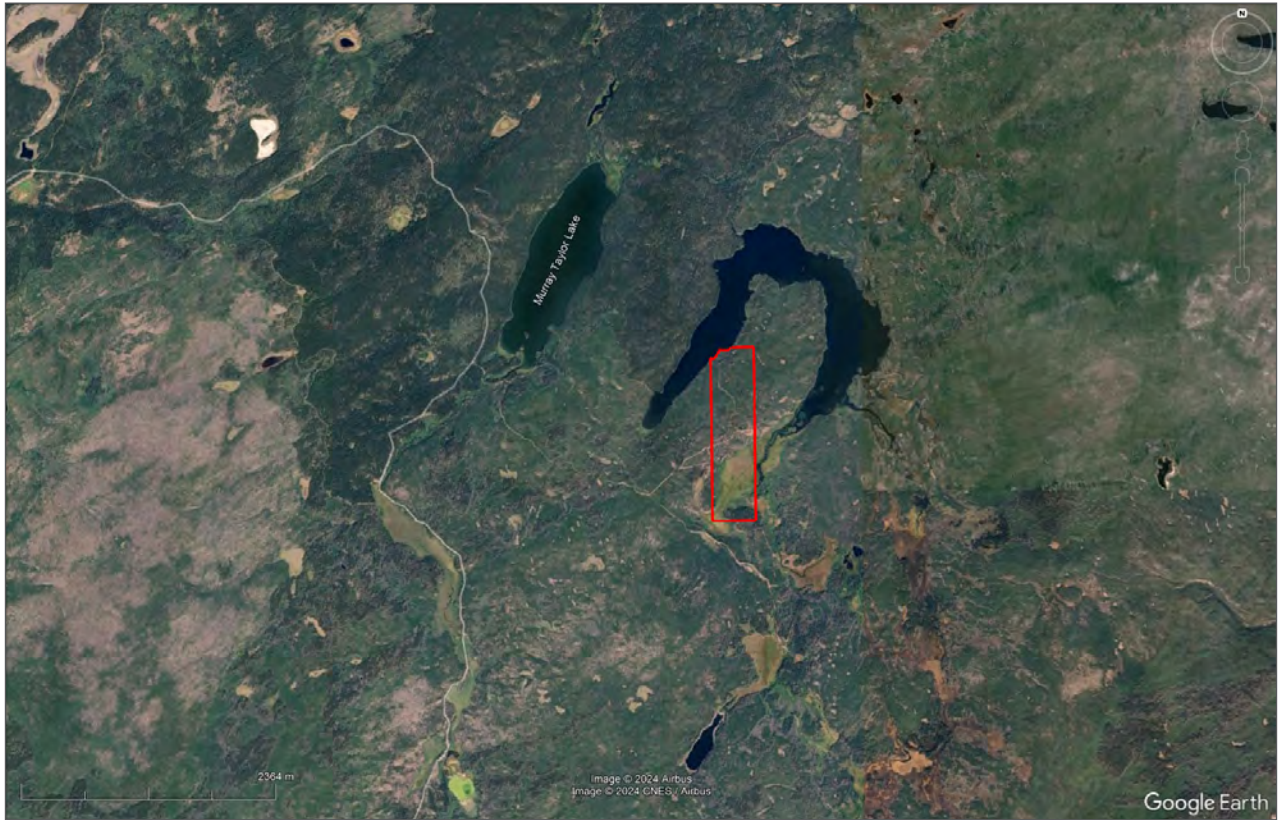


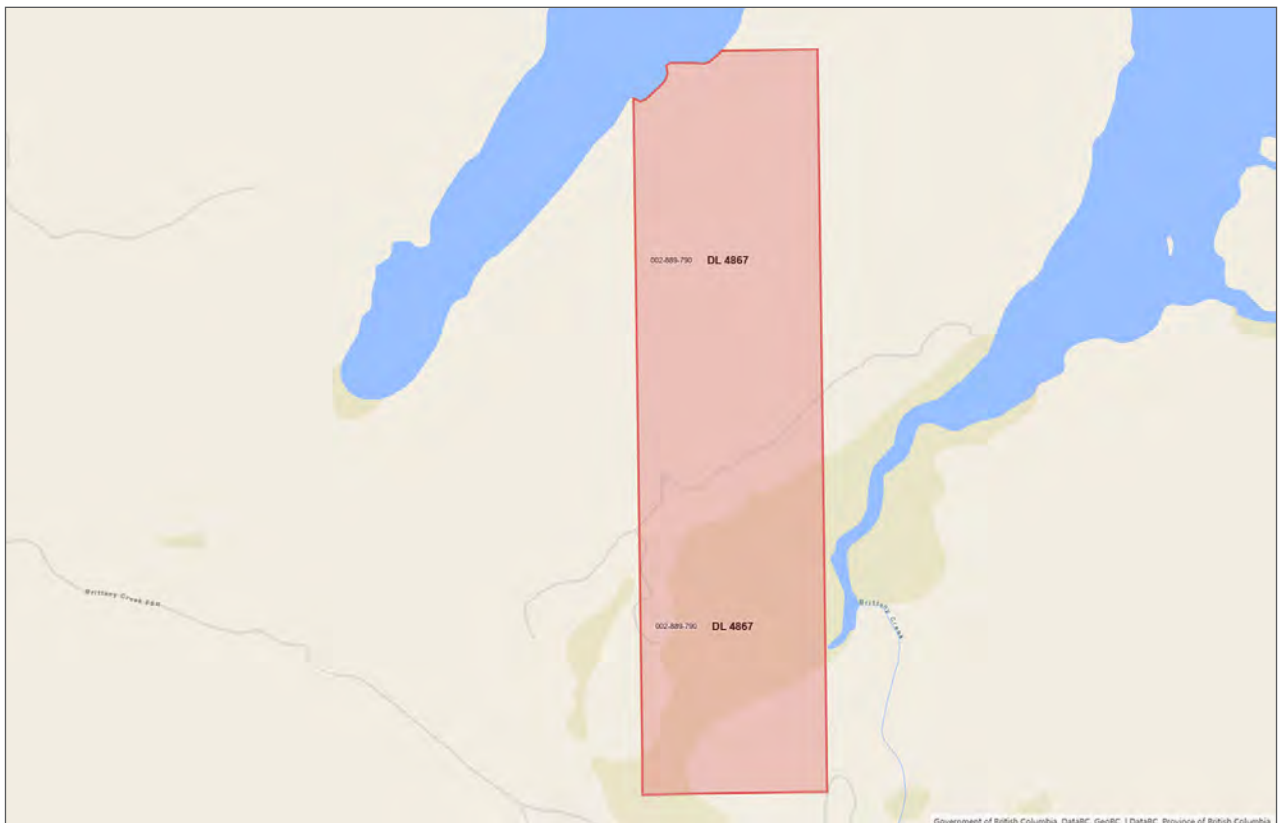
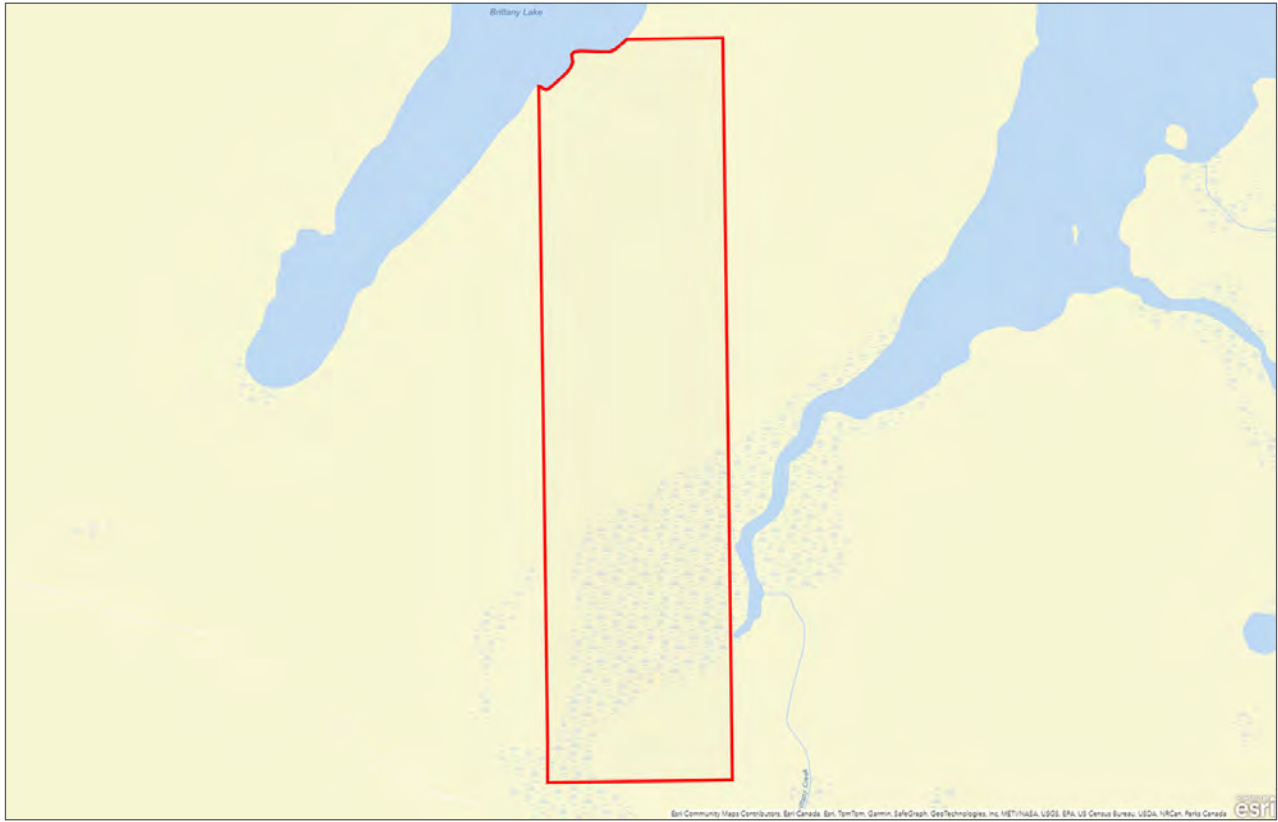
















Marketing British Columbia to the World®



[www.landquest.com](http://www.landquest.com)



**Fawn Gunderson**

Personal Real Estate Corporation

Representative

[fawn@landquest.com](mailto:fawn@landquest.com)

(250) 982-2314

---

LandQuest® Realty Corporation  
101 - 313 Sixth Street  
New Westminster, BC V3L 3A7

Phone: (604) 664-7630 Fax: (604) 516-6504

Toll Free: 1-866-558-5263 (LAND)