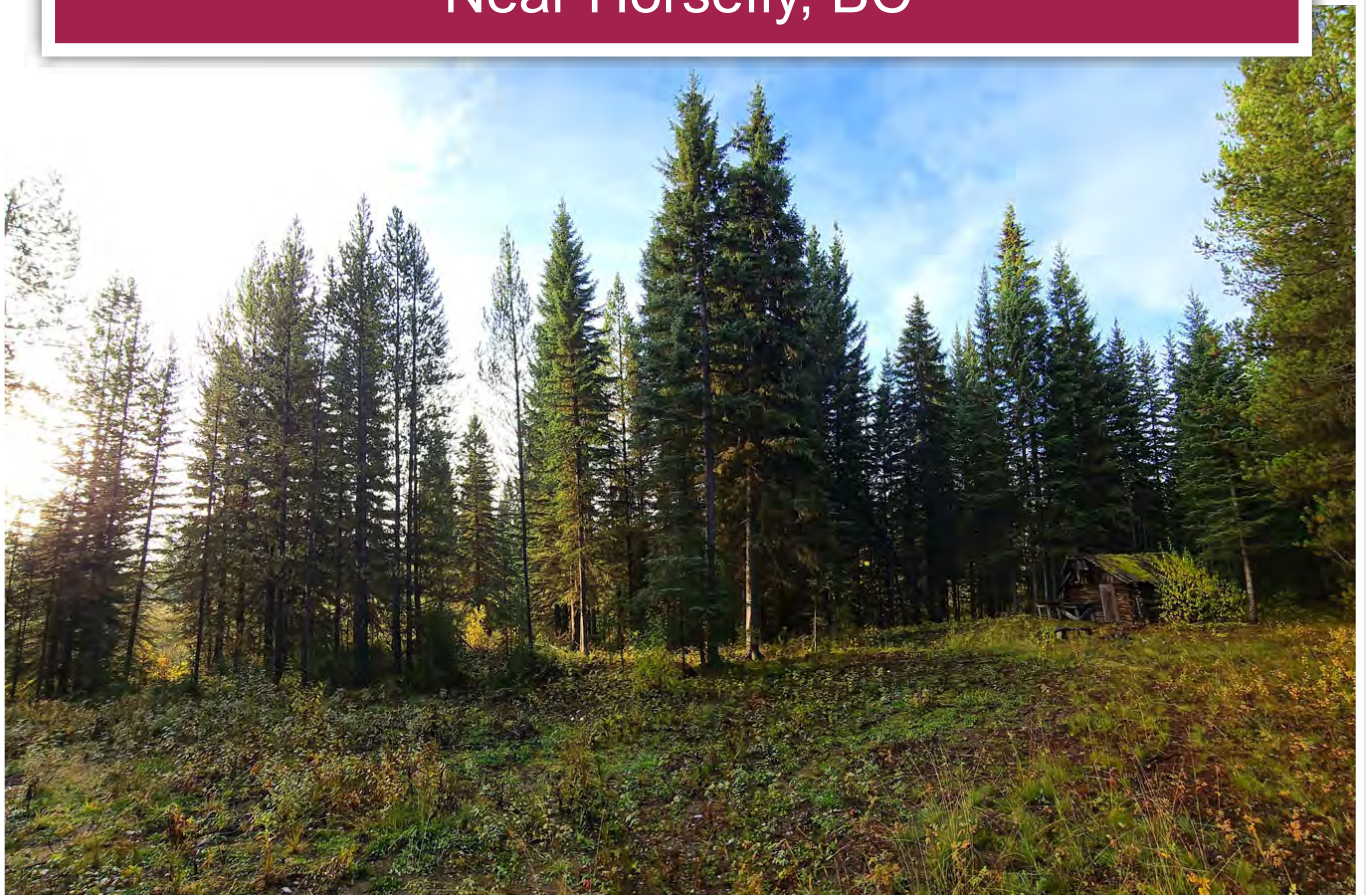




DL 12165 Mckinley Trail
Near Horsefly, BC



www.landquest.com

Sandy Sleath
sandy@landquest.com
(604) 413-0615



Marketing British Columbia to the World®



“The Source” for Oceanfront, Lakefront,
Islands, Ranches, Resorts & Land
in British Columbia

www.landquest.com

DL 12165 Mckinley Trail

Near Horsefly, BC

PROPERTY DETAILS

Listing Number:	24258
Price:	\$159,000
Taxes (2024):	\$171.63
Size:	10 acres
Zoning:	RR1

DESCRIPTION

Nestled in the heart of British Columbia's breathtaking Cariboo Mountains, this exceptional 10-acre parcel of land is a true hidden gem for those seeking a private sanctuary for outdoor adventure and tranquility. Accessible via a scenic drive approximately 40 kilometres from the historic gold rush village of Horsefly, this property offers a remarkable escape from the hustle and bustle yet remains within a day's drive from Vancouver.

Surrounded by Crown land on all sides, this south-facing haven promises unrivaled privacy with no neighbors for miles. The natural beauty of the area presents endless opportunities for recreation, exploration, and wildlife observation. The region is rich in diverse wildlife, including moose, deer, goats, bears, grouse, and waterfowl, making it an ideal location for nature enthusiasts and hunters alike.

Molybdenite Creek gracefully winds along the southern boundary of the property, its beaver ponds sustaining year-round water levels that create prime moose habitat. Imagine stepping out your

door and finding yourself in a serene landscape where nature thrives. The sound of flowing water and the rustle of leaves invite you to explore the many trails and hidden corners of your secluded paradise.

For fishing aficionados, you're in luck! This property is strategically located near some of the most renowned fishing lakes in the region, including Tisdall, McKinley, Bosk, and Elbow lakes, all of which are just a stone's throw away. In winter, adventure continues with the majestic Eureka Peak and Mount Timothy, both providing fantastic options for skiing and snowboarding.

At the heart of this stunning property lies an original trappers' cabin, beautifully framed by towering mature spruce and fir trees. This structure has long seen its best days but can be found still standing telling the adventurous stories of the past. There is a reason that a trapper chose this location, and the swamps created by a healthy beaver population was likely why. Imagine creating your own cabin or vacation home in this unique and rustic atmosphere with stunning panoramic mountain views as your backdrop. Picture yourself relaxing by a sunny swimming hole, where you can unwind after a day of outdoor pursuits or host gatherings with friends and family.

Whether you seek an idyllic getaway, a hunting lodge, or a family retreat, this untouched sanctuary in the Cariboo Mountains is ready to welcome you. Experience the harmony of nature and the thrill of adventure in a place where memories are made, and the beauty of the wilderness is at your doorstep.

Don't miss the opportunity to own this extraordinary piece of paradise. Schedule your private viewing today and start your journey to a life filled with exploration, tranquility, and the joys of nature!

This property is being offered for \$159,000 and we don't expect it to last!

LOCATION

DL 12165 Mckinley Trail - Horsefly, BC

DIRECTIONS

To drive from Vancouver to this property, start your journey by heading east on the Trans-Canada Highway (BC-1 E). As you make your way out of the city, follow the signs directing you to merge onto BC-97 N toward Cache Creek. This route will take you through the picturesque Fraser Valley, offering stunning views along the way.

Continue on BC-97 N, passing through the charming towns of Cache Creek and Clinton. Once you reach Williams Lake, stay on BC-97 N for a short stretch before turning onto BC-20 E, which leads you toward Quesnel.

After about 24 kilometres along BC-20E, you'll need to turn right onto Horsefly Road (BC-100), which will guide you toward the village of Horsefly.

At Clarke's General Store in Horsefly head right over the bridge on the Horsefly River. The drive to the property from here is approx. 45 minutes. Follow the river along Black Creek Valley Road without turning for approx. 35 minutes. When the road forks, turn right along the "500 Road", over bridges on the Horsefly River and McKinley Creek, past Tisdall Lake turn off.

Continue without turning; at the fork sign to Elbow Lake turn left to the "KM 515" road marker. The property entrance is 800 m on the right, with a



cable across the drive entrance. The walk in up the driveway is approximately 150 m to the old cabin.

This journey typically takes around 7 to 8 hours, so be sure to plan for breaks along the way and check road conditions before you set off. Enjoy your trip into the stunning Cariboo region!

AREA DATA

Horsefly is a charming community set against the backdrop of the stunning Cariboo region, characterized by its breathtaking natural landscapes and outdoor activities. The area is surrounded by rolling hills, dense forests, and

pristine lakes, creating a picturesque setting that invites exploration and adventure.

One of the defining features of Horsefly is its proximity to both rivers and lakes, making it a haven for fishing enthusiasts. The Horsefly River meanders through the landscape, offering excellent spots for anglers seeking trout and other species. Nearby, lakes like Horsefly Lake and McKinley Lake provide additional opportunities for swimming, kayaking, and enjoying serene waterfront picnics.

The surrounding wilderness is a playground for outdoor lovers, with a network of trails perfect for hiking, mountain biking, and horseback riding. Whether you're a seasoned adventurer or a casual walker, the area boasts trails that cater to all skill levels, leading through lush forests and alongside sparkling waters. Wildlife abounds, making it an ideal destination for birdwatchers and those hoping to catch a glimpse of deer, bears, and various bird species in their natural habitat.

Horsefly also has a vibrant sense of community, hosting various local events and festivals throughout the year that bring residents together and celebrate the area's culture and heritage. The town's history, rooted in the gold rush era, adds a layer of intrigue, with several historical sites and museums that provide insight into the region's past.

Despite its small population, Horsefly offers a peaceful, rural lifestyle, allowing residents to escape the hustle and bustle of city life. The expansive landscapes surrounding the town are perfect for those interested in self-sufficient living, with ample space for gardening, raising livestock, and enjoying the simple pleasures of life in nature.

Overall, Horsefly is a hidden gem that beautifully combines natural beauty, outdoor adventure, and a strong sense of community, making it an inviting destination for those looking to immerse themselves in the great outdoors.

VEGETATION

The vegetation around Horsefly is a stunning display of diverse flora, shaped by its unique climate and geography. Nestled in the Cariboo region, this area boasts a mix of lush forests, open meadows, and riparian zones that create a vibrant ecosystem.

The predominant vegetation includes mature coniferous trees such as lodgepole pine, spruce, and fir, which form dense forests that provide habitat for wildlife. These towering trees create a cool, shaded environment, particularly in the summer months. Understory vegetation often features shrubs like huckleberry and currant, alongside a variety of ferns and wildflowers that add splashes of color to the forest floor.

Scattered throughout the region, open meadows are alive with grasses and wildflowers during the warmer months. Species like bluebunch wheatgrass and western yarrow thrive in these areas, attracting pollinators and offering a picturesque contrast to the surrounding forests. These meadows are often fringed with vibrant wildflowers such as lupines and paintbrush, creating a breathtaking natural display. Along the waterways, including the Horsefly River and various creeks, lush riparian vegetation thrives. Willows, alders, and cottonwoods line the banks, providing critical habitat for birds and other wildlife. The moist environment supports a rich diversity of plant life, contributing to the overall health of the ecosystem.

The region's vegetation changes dramatically with the seasons. In spring, wildflowers burst into bloom, while summer brings lush greenery. Autumn showcases vibrant foliage, with aspens and maples turning brilliant shades of yellow and red before shedding their leaves for winter. This rich and diverse vegetation not only enhances the beauty of Horsefly but also supports a wide range of wildlife, making it a cherished location for nature

lovers and outdoor enthusiasts. Whether exploring the forests, meadows, or riverside areas, visitors will find a thriving ecosystem that showcases the natural splendor of British Columbia.

RECREATION

Horsefly offers an abundance of recreational opportunities that cater to nature enthusiasts, adventure seekers, and those looking to unwind in a peaceful setting.

The surrounding landscape is crisscrossed with trails that range from easy walks to challenging hikes. Popular routes include the trails around Horsefly Lake and the nearby Cariboo Mountains, where hikers can enjoy breathtaking views, diverse plant life, and the chance to spot local wildlife. Mountain biking enthusiasts will also find well-maintained trails that cater to various skill levels, offering thrilling rides through the forests and meadows.

Horsefly is renowned for its excellent fishing opportunities. The Horsefly River and nearby lakes, such as Horsefly Lake, are teeming with fish, including rainbow trout and kokanee salmon. Anglers can enjoy both fly-fishing and traditional fishing methods, with many spots easily accessible from shore or by boat.

The region is rich in wildlife, making it an ideal spot for viewing animals in their natural habitats. Moose, deer, bears, and various bird species are commonly spotted, especially in the quieter early morning or late evening hours. Wildlife enthusiasts can explore the area with binoculars or a camera to capture stunning photographs.

During the warmer months, Horsefly Lake becomes a hub for water activities. Visitors can enjoy swimming, kayaking, and paddleboarding in its crystal-clear waters. Boating is also popular,

with opportunities for water skiing and fishing from motorized boats.

For those interested in hunting, the surrounding Crown land offers a variety of game species. The region is well-known for its moose, deer, and bear populations, making it a favored destination for hunters during the appropriate seasons.

In winter, the landscape transforms into a snowy wonderland. The nearby Mount Timothy and Eureka Peak provide excellent skiing and snowboarding options, catering to both beginners and experienced snow enthusiasts. Snowshoeing and cross-country skiing are also popular, with trails that meander through the stunning winter scenery.

Horsefly also hosts various community events throughout the year, including seasonal festivals and outdoor markets, which provide opportunities to engage with local culture and meet fellow outdoor enthusiasts. With its diverse array of recreational opportunities, Horsefly is a haven for those who appreciate the great outdoors, offering something for everyone, regardless of the season.

HISTORY

Horsefly is steeped in rich history, particularly tied to the gold rush era that transformed the region in the late 19th century. The area was originally inhabited by Indigenous peoples, including the Secwepemc and Tsilhqot'in Nations, who lived off the land and maintained a deep connection to the natural resources.

The discovery of gold in the Cariboo region in the early 1850s marked the beginning of a significant influx of settlers and prospectors. In 1858, gold was discovered on the Fraser River, leading to a massive migration of fortune-seekers from the United States and Europe. This discovery set off a gold rush that brought thousands of people to British Columbia, hoping to strike it rich.



The Horsefly River was one of the key waterways for miners during this time. The river was rich in gold, attracting many prospectors who flocked to its banks. By the early 1860s, the town of Horsefly began to develop as a supply point for miners heading to the more remote goldfields.

In 1862, the Cariboo Wagon Road was constructed to facilitate access to the region's gold mines. This road connected the goldfields with the burgeoning towns of Barkerville and Quesnel, making travel and transport easier. Horsefly became a critical stop along this route, providing essential services such as food, supplies, and accommodations for weary travelers and miners.

The nearby town of Barkerville, which became the most famous gold rush town in British Columbia, was a mere 90 kilometres away from Horsefly. At its peak, Barkerville boasted a population of around 5,000 and was home to numerous businesses, including saloons, theaters, and shops. Horsefly served as a staging area for miners and traders heading to and from Barkerville, further establishing its importance during the gold rush.

As gold became harder to find and mining operations became less profitable, many prospectors began to leave the area in search of better opportunities. By the late 1800s, the gold rush had begun to wane,

and the population of Horsefly declined. However, the discovery of other resources, such as timber, helped sustain the local economy.

Despite the decline in gold mining, Horsefly's historical significance remains. The gold rush era left a lasting legacy, shaping the community and the surrounding landscape. Today, visitors can explore remnants of this vibrant history, including old mining sites and interpretive displays.

In addition to its mining history, Horsefly has a rich cultural heritage that reflects both Indigenous traditions and settler influences. The community continues to celebrate this history through local events and festivals that honor its roots, offering a glimpse into the lives of those who came seeking fortune in the rugged wilderness.

Horsefly stands as a testament to the resilience and spirit of the people who shaped it during the gold rush, making it a fascinating destination for those interested in British Columbia's historical narrative.

MAP REFERENCE

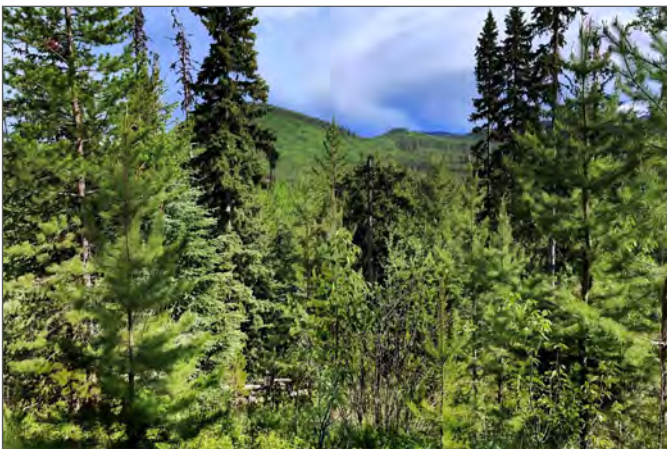
52°13'12.82"N and 120°55'9.76"W

LEGAL

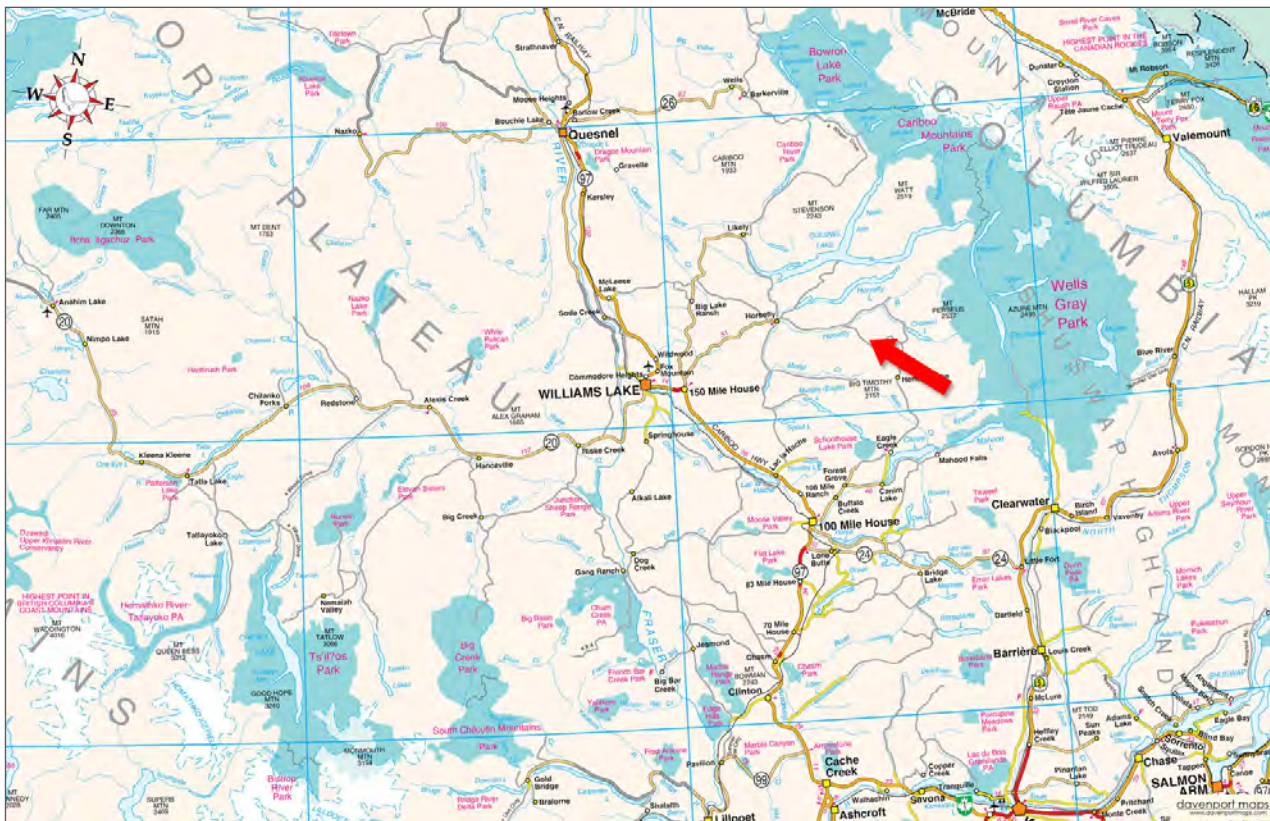
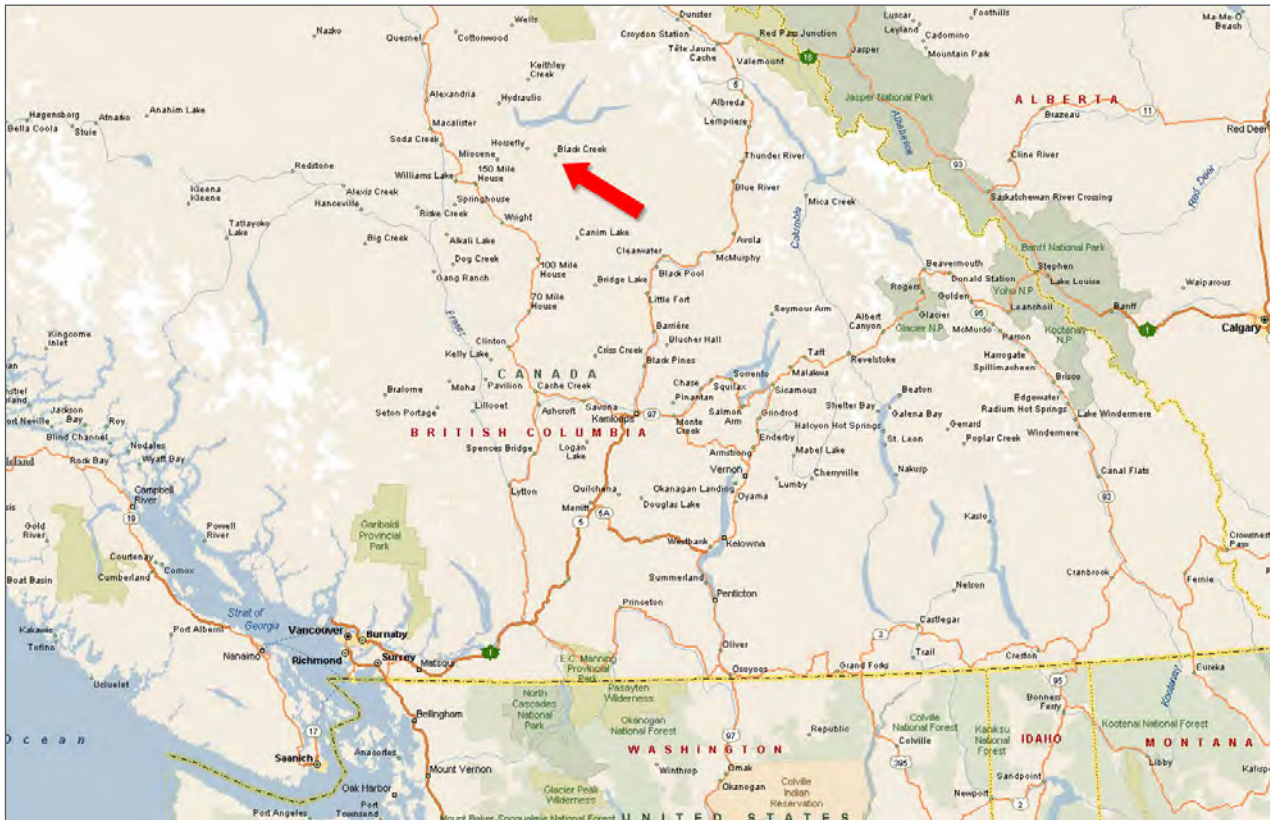
District Lot 12165 Cariboo District

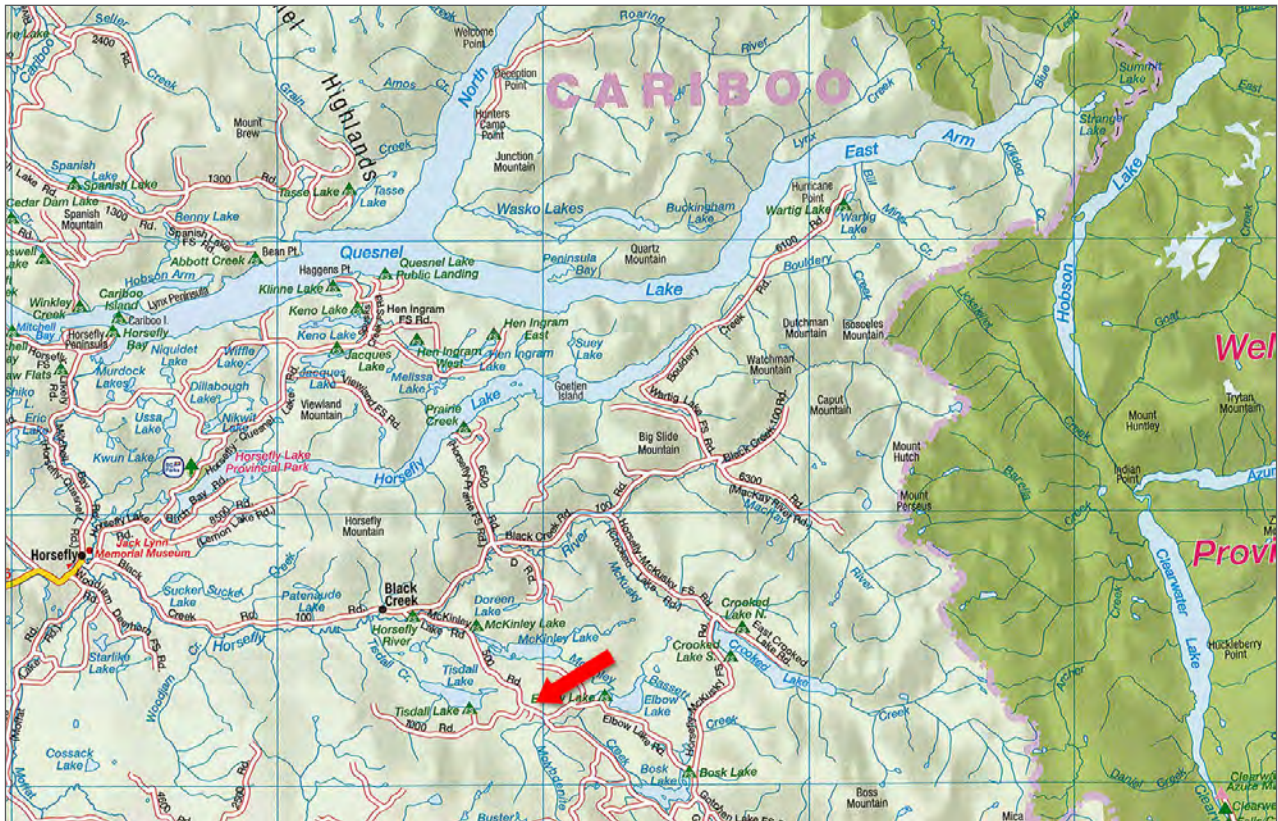
PID 007-222-092















Notes





Marketing British Columbia to the World®



www.landquest.com



Sandy Sleath

Representative
sandy@landquest.com
(604) 413-0615

LandQuest® Realty Corporation
101 - 313 Sixth Street
New Westminster, BC V3L 3A7

Phone: (604) 664-7630 Fax: (604) 516-6504
Toll Free: 1-866-558-5263 (LAND)