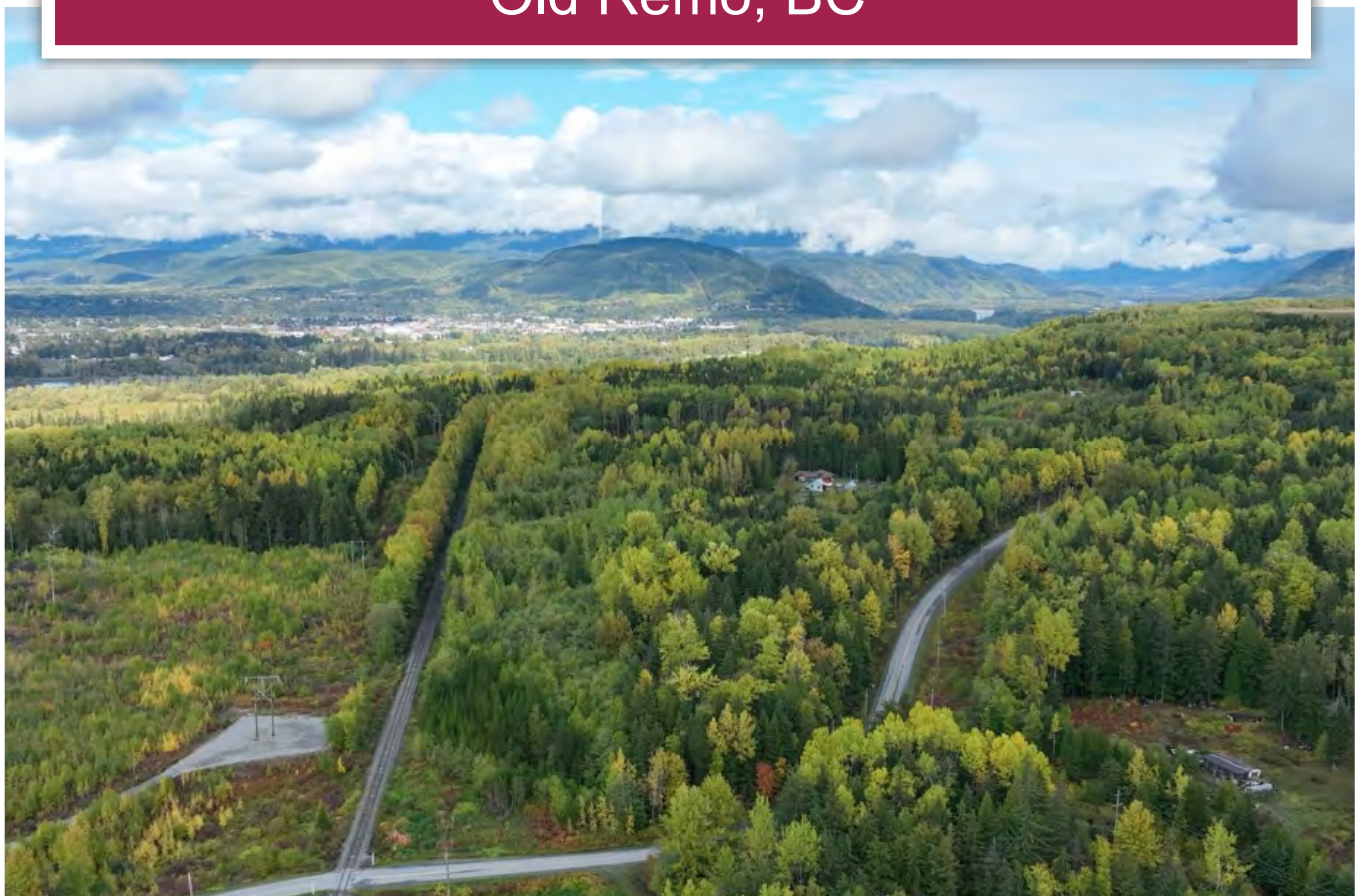




District Lot 1916
Old Remo, BC



Sam Hodson
Personal Real Estate Corporation
sam@landquest.com
(604) 809-2616

Sandy Sleath
sandy@landquest.com
(604) 413-0615



Marketing British Columbia to the World®



“The Source” for Oceanfront, Lakefront,
Islands, Ranches, Resorts & Land
in British Columbia

www.landquest.com

District Lot 1916

Old Remo, BC

PROPERTY DETAILS

Listing Number:	24241
Price:	\$169,000
Taxes (2024):	\$376.57
Size:	5.26 acres
Zoning:	RU

DESCRIPTION

Discover the perfect canvas for your dream home on this stunning 5.25-acre lot, just 10 minutes from downtown Terrace! This picturesque parcel features flat terrain, making it an ideal setting for building. Adorned with beautiful second-growth trees and a serene water area, the property offers endless landscaping possibilities to create your own personal oasis.

Surrounded by breathtaking mountain views, this slice of paradise is not only a fantastic spot for a custom residence but also perfect for a charming hobby farm. Imagine waking up to the sound of nature and enjoying the tranquility that this unique property provides.

Don't miss out on this incredible opportunity to secure your piece of idyllic living. Schedule a viewing today and start envisioning the life you've always dreamed of!

LOCATION

Lot 1 District Lot 1916 Coastal Range 5, Old Remo Road - Terrace, BC

DIRECTIONS

To get to Old Remo Road in Terrace, start your journey in Vancouver by heading northeast on the Trans-Canada Highway (BC-1 E). After about 100 kilometres, merge onto BC-97 N towards Cache Creek. Continue on BC-97 N until you reach the junction with BC-16 W.

Once on BC-16 W, you'll follow this scenic route for approximately 400 kilometres, enjoying the beautiful landscapes of British Columbia. As you approach Terrace, look for signs leading you to Terrace Avenue. Take the exit for Terrace Avenue, and then you can turn onto Old Remo Road.

Make sure to check the road conditions ahead of time, especially during winter months, and enjoy your trip!

AREA DATA

As a newcomer to Terrace, you'll find that this area offers the perfect blend of rural living and modern convenience. Nestled in the stunning Skeena Valley and surrounded by majestic mountains, Terrace is a haven for those seeking a more peaceful lifestyle while still having access to essential amenities.

One of the most significant benefits of rural living here is the incredible connection to nature. You'll have endless opportunities for outdoor activities—hiking, fishing, and skiing are just moments away.

The breathtaking landscapes provide a serene backdrop for your daily life, encouraging an active and healthy lifestyle.

The sense of community in Terrace is another highlight. With a population that values friendliness and support, you'll quickly feel at home. The local events and festivals foster connections among residents, creating a strong network of neighbors who look out for one another.

Living in Terrace also means enjoying spacious properties and less congestion. You can savor the tranquility of wide-open spaces, where children can play freely and pets can roam. The lower cost of living compared to urban centers allows for a more comfortable lifestyle, whether you're looking to build a dream home or start a hobby farm.

The area boasts excellent schools and recreational facilities, making it family-friendly while maintaining a rural charm. Plus, with essential services and shops just a short drive away, you'll enjoy the best of both worlds—access to modern conveniences without sacrificing the peace of rural life.

In Terrace, you'll discover that rural living offers a slower pace, rich natural beauty, and a tight-knit community that welcomes you with open arms. Embrace the adventure of your new home!

VEGETATION

The area around Terrace is a lush, vibrant ecosystem that showcases the stunning beauty of the Pacific Northwest. The region is characterized by a diverse array of vegetation, including towering coniferous trees like spruce, fir, and cedar, which thrive in the moist, temperate rainforest climate. You'll also find mixed woodlands with deciduous trees such as birch and alder, particularly in the lower elevations.

In the spring and summer, the landscape bursts into color with a variety of wildflowers, including fireweed, lupine, and yellow buttercups, which blanket the meadows and hillsides. The wetlands and riverbanks are rich with shrubs like willow and dogwood, providing vital habitat for wildlife.

Speaking of wildlife, the area is home to an impressive range of species. You might spot black bears roaming through the forests, especially during berry season, as well as moose and deer that frequently wander into more open areas. The region's rivers and lakes support a thriving fish population, including salmon, which draw in not just anglers but also eagles, bears, foxes, wolves, martin, river otters, blue heron, mergansers, as well as many other species that rely on the annual salmon spawning return.

Birdwatchers will delight in the variety of avian species, from the majestic bald eagle to various songbirds that flit through the trees. The wetlands attract waterfowl, making it a vibrant spot for birdlife year-round.

Overall, the vegetation and wildlife around Terrace create a rich tapestry of life, making it a paradise for nature lovers and outdoor enthusiasts alike. Whether you're hiking through the forests, fishing in the rivers, or simply enjoying the breathtaking scenery, you'll be surrounded by the incredible diversity of the natural world.

RECREATION

Terrace is a true paradise for outdoor enthusiasts, particularly for those who love fishing and skiing. The region's stunning natural landscapes provide endless opportunities for adventure.

Terrace is renowned for its exceptional fishing. The Skeena River, one of the most famous fishing spots in Canada, is just minutes away. Anglers flock here to catch wild salmon, including chinook, coho, and sockeye, especially during the summer and fall runs. The river's diverse ecosystem also supports trophy steelhead, making it a year-round fishing destination.

In addition to the Skeena, the area boasts numerous lakes and smaller rivers that are perfect for fishing. Lakes like Lakelse and Hirsch Creek



are popular spots where you can catch trout and other freshwater species. Whether you prefer fly fishing, spin casting, or simply relaxing by the water, Terrace offers an idyllic setting for every angler.

When winter blankets the region in snow, Terrace transforms into a winter wonderland, offering fantastic skiing and snowboarding opportunities. The nearby Shames Mountain Ski Area is a local favorite, featuring a range of runs suitable for all skill levels. With its well-groomed trails and stunning views of the surrounding mountains, Shames is perfect for families, beginners, and seasoned skiers alike.

In addition to downhill skiing, the area offers excellent cross-country skiing and snowshoeing trails, allowing you to explore the picturesque winter landscape at a more leisurely pace. The local community often organizes events and races, adding to the vibrant winter sports culture in the region.

As the snow melts and the flowers bloom, Terrace becomes a hiker's paradise. The region boasts an extensive network of trails that cater to all levels of hikers. Popular hikes include the scenic trails around the Lakelse Lake Provincial Park, where you can enjoy breathtaking views and access to pristine lakes. The trails in the surrounding mountains, such as the impressive Pyramid Mountain, offer more challenging routes with rewarding vistas at the summit. Whether you're seeking a leisurely stroll or an adventurous trek, the diverse hiking opportunities around Terrace allow you to fully immerse yourself in the region's natural beauty.

Whether you're casting a line in the crystal-clear waters or carving through fresh powder on the slopes, Terrace provides abundant recreational opportunities that particularly cater to fishing, skiing, and hiking enthusiasts. With its breathtaking scenery and access to nature, it's easy to see why outdoor lovers are drawn to this stunning part of British Columbia.

HISTORY

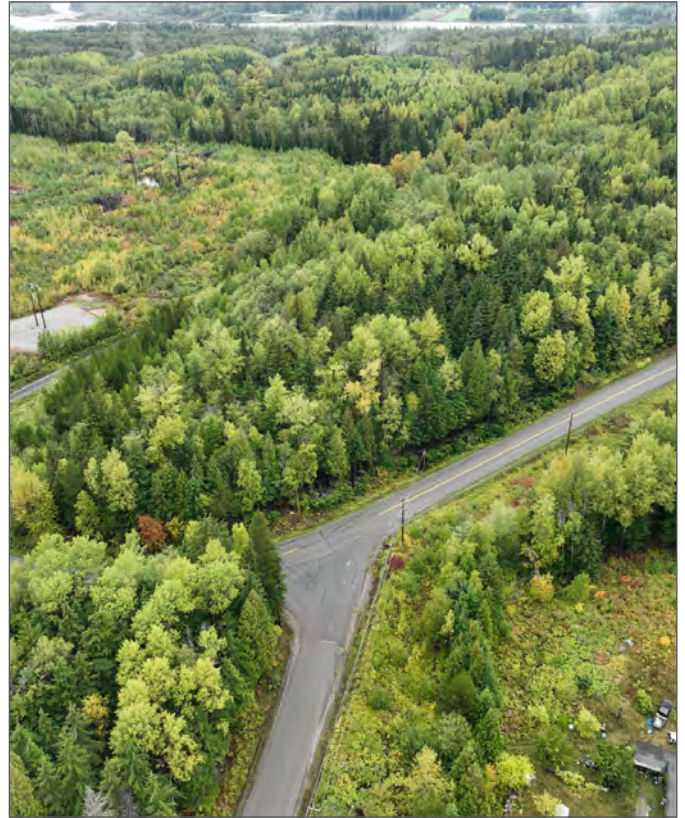
The history of the Terrace area is rich and multifaceted, rooted in both Indigenous heritage and the development of European settlement. For thousands of years, the region has been home to the different indigenous bands whose culture is rich with traditions, art, and spirituality. The Skeena River, in particular, has played a crucial role in their way of life, providing abundant fish and serving as a vital transportation route.

European contact began in the late 18th century, primarily through fur traders and explorers. The Hudson's Bay Company established trading posts in the area, paving the way for increased exploration and settlement. By the late 19th century, the arrival of the railway significantly boosted development in Terrace. The construction of the Grand Trunk Pacific Railway in the early 1900s opened up the region to settlers, leading to the establishment of a thriving community.

Terrace was officially incorporated as a village in 1958, and over the decades, it has grown into a vibrant town. The local economy has historically been driven by industries such as forestry, fishing, and agriculture. The rich natural resources of the area attracted settlers looking to take advantage of its abundant wildlife and fertile land.

Today, the history of Terrace is celebrated through various cultural events and institutions, including the annual Skeena Salmon Festival, which honors the importance of salmon in both Indigenous and settler cultures. The city also serves as a hub for art and culture, showcasing the rich heritage of the Indigenous peoples.

The history of the Terrace area is a tapestry woven from Indigenous traditions and the influences of European settlement. This rich past continues to shape the community today, creating a unique



blend of cultures and a deep appreciation for the natural environment that surrounds it.

MAP REFERENCE

54°28'45.35"N and 128°36'43.68"W

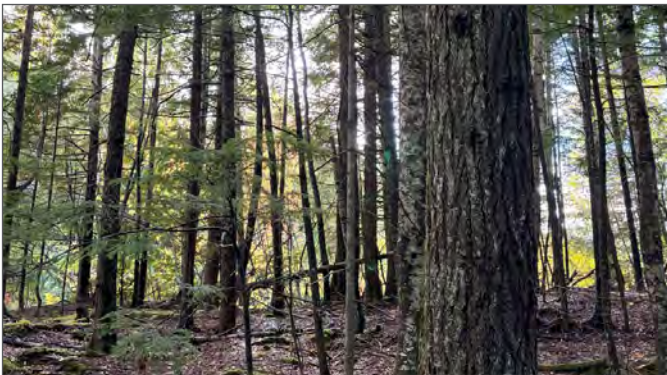
LEGAL

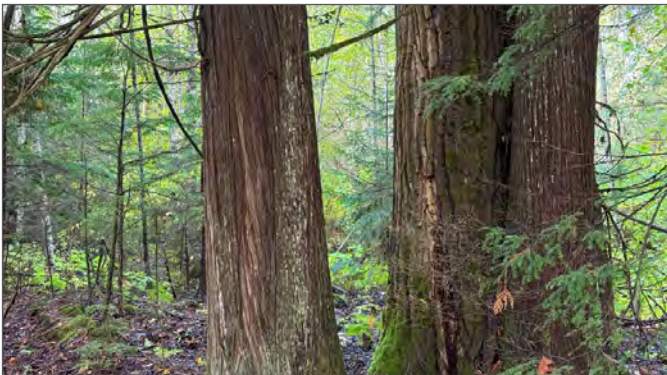
LOT 1 DISTRICT LOT 1916 RANGE 5 COAST
DISTRICT PLAN 4097

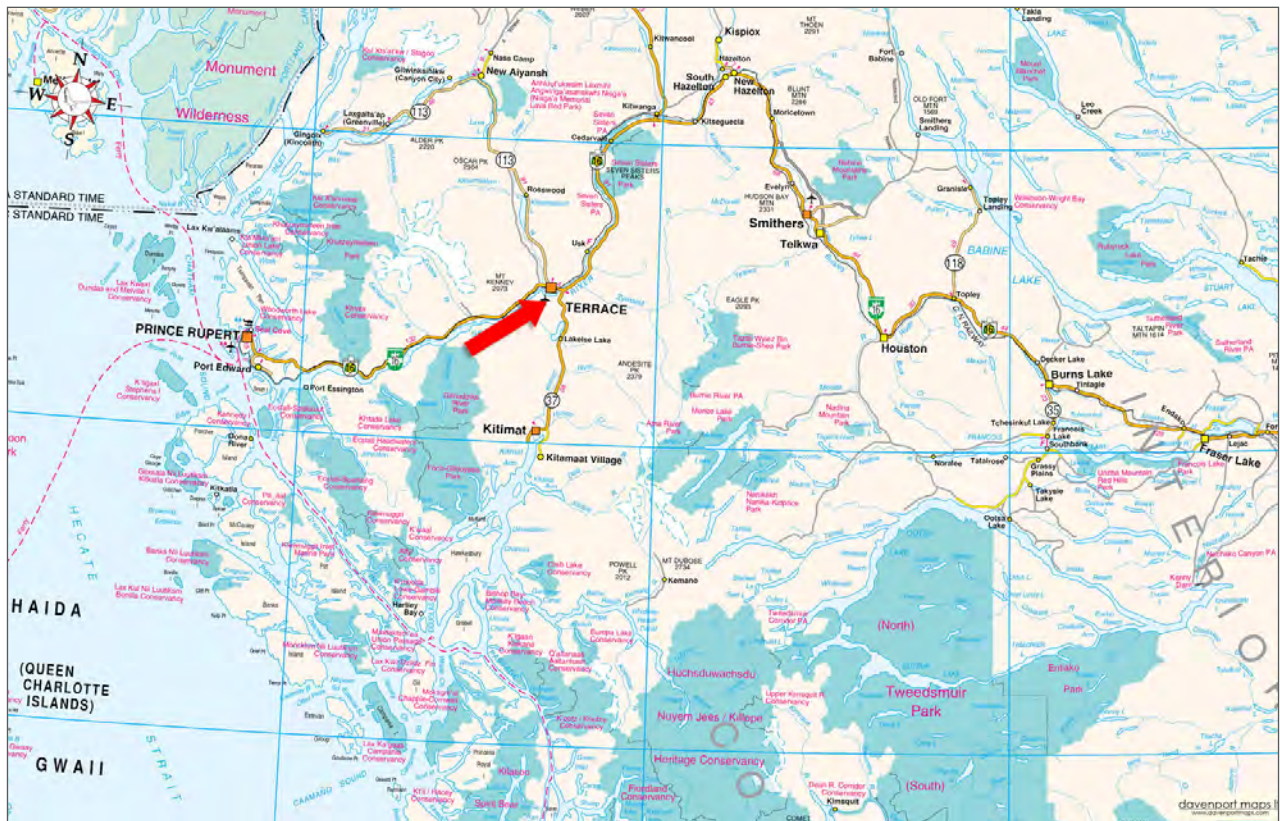
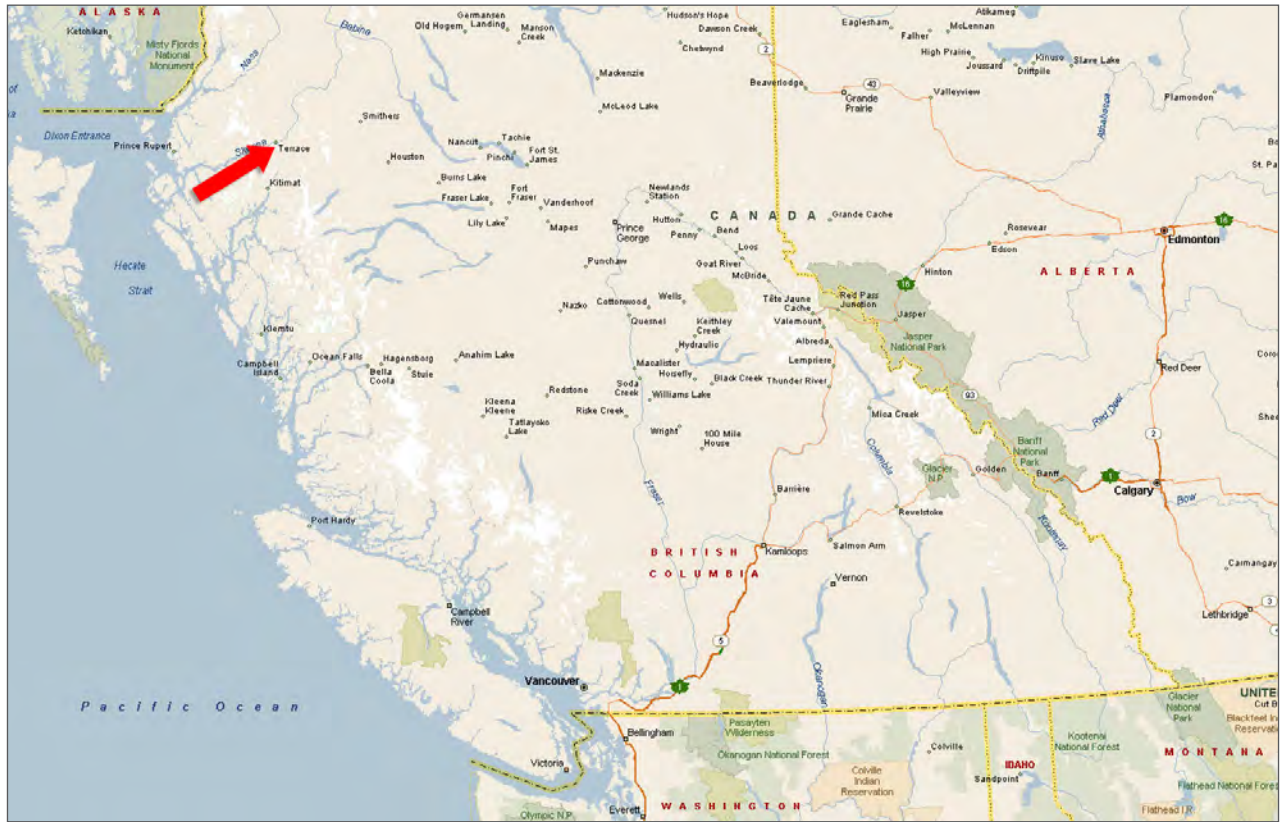
PID 011-647-400

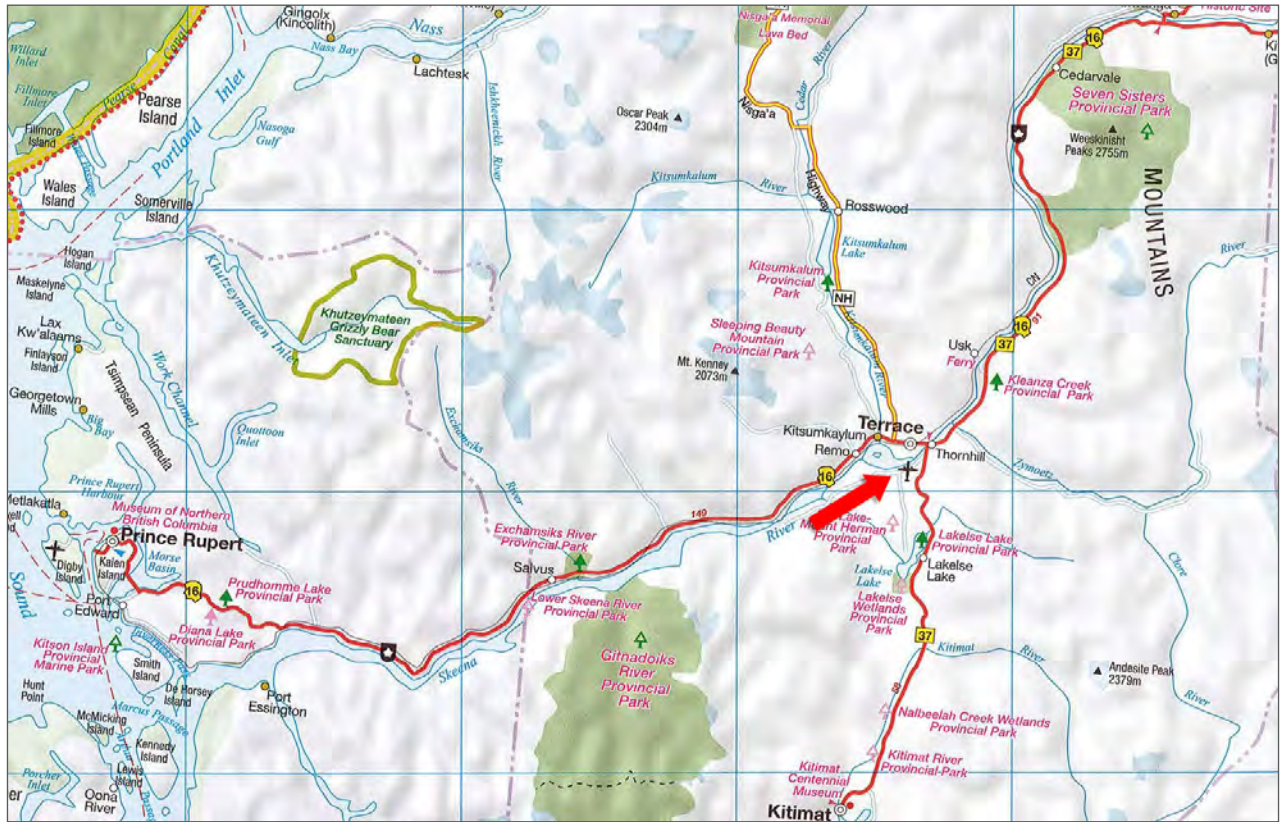








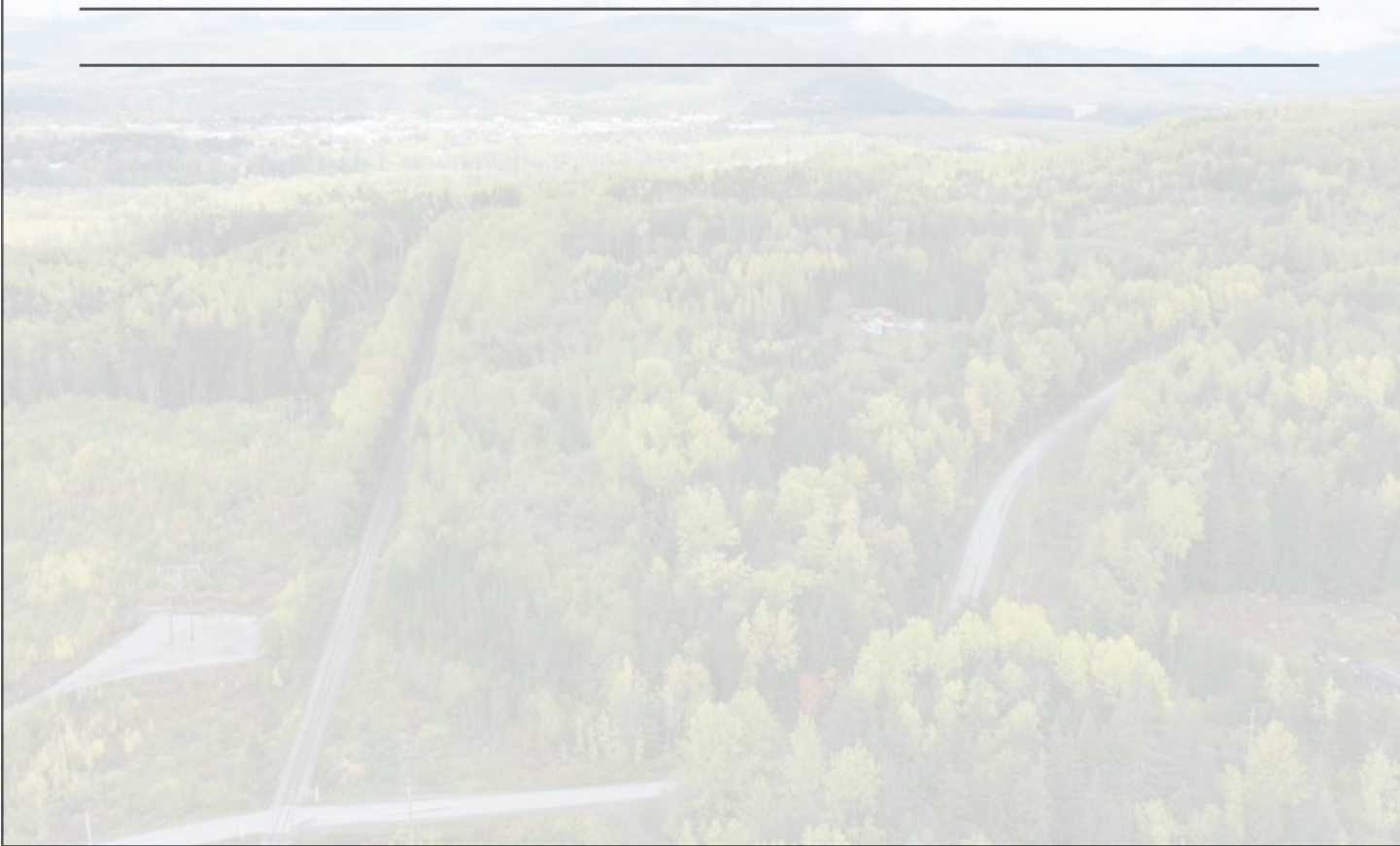








Notes





Marketing British Columbia to the World®



www.landquest.com



Sam Hodson
Personal Real Estate Corporation
President
sam@landquest.com
(604) 809-2616



Sandy Sleath
Representative
sandy@landquest.com
(604) 413-0615

LandQuest® Realty Corporation
101 - 313 Sixth Street
New Westminster, BC V3L 3A7

Phone: (604) 664-7630 Fax: (604) 516-6504
Toll Free: 1-866-558-5263 (LAND)